

TECHNICAL MANUAL

**DIRECT SUPPORT, AND GENERAL SUPPORT MAINTENANCE
REPAIR PARTS AND SPECIAL TOOLS LIST
(INCLUDING DEPOT MAINTENANCE REPAIR PARTS
AND SPECIAL TOOLS)
FOR**

**AUTOMATIC SPEED TRIM AMPLIFIERS
CH-47A, CH-47B, AND CH-47C HELICOPTERS
(NSN 6610-00-688-9496)
(NSN 1680-00-907-0795)
(NSN 6615-00-088-4427)
(NSN 6615-00-809-5229)
(NSN 6615-00-179-4968)
(NSN 6615-01-140-8045)**

HEADQUARTERS, DEPARTMENT OF THE ARMY

21 SEPTEMBER 1983

Technical Manual
NO. 11-6610-202-34P



HEADQUARTERS
DEPARTMENT OF THE ARMY
Washington, DC, 21 SEPT 1983

**DIRECT SUPPORT, AND GENERAL SUPPORT MAINTENANCE
REPAIR PARTS AND SPECIAL TOOLS LIST
FOR
AUTOMATIC SPEED TRIM AMPLIFIERS CH-47A, CH-47B,
AND CH-47C HELICOPTERS
(NSN 6610-00-688-9496) (NSN 1680-00-907-0795)
(NSN 6615-00-088-4427) (NSN 6615-00-809-5229)
(NSN 6615-00-179-4968) (NSN 6615-01-140-8045)
Current as of 27 June 1983**

REPORTING ERRORS AND RECOMMENDING IMPROVEMENTS
You can help improve this manual. If you find any mistakes or if you know of a way to improve the procedures, please let us know. Mail your letter, DA Form 2028 (Recommended Changes to Publications and Blank Forms), or DA Form 2028-2 located in the back of this manual direct to Commander, US Army Communications-Electronics Command and Fort Monmouth, ATTN:DRSEL-ME-MP, Fort Monmouth, NJ 07703.
In either case, a reply will be furnished direct to you.

Table of Contents

		Page	Illus Figure
Section	I. Introduction.....	1	
	II. Repair Parts List.....	5	
Group	00 Speed Trim Amplifier 114E2186-16, -19, -23, -26, -30, -33.....	5	1
	01 Servoamplifier 114H6000-1, -2, -3, -4, -5.....	11	2
	02 Servoamplifier 114V4009-2.....	15	3
	03 Calibration Component Assembly 114V4000-1, -2, -3, -4.....	21	4
	04 Calibration Component Assembly 114V4013-1, -3.....	25	5
	05 Preamplifier Component Assembly 107H5001, -3, -6, -8.....	31	6
	06 Selector Switch 114E2186-18, -25, -32.....	35	7
	07 Sensor 114H5400-2, -3, -4.....	37	8
	08 Chassis Assembly Metal 114E2184-11, -13.....	41	9
	09 Cable Harness 114E2186-17, -20, -22, -24, -31, -34.....	43	10
Section	III. Special Tools List (114E5989-1, -5).....	45	11
	IV. National Stock Number and Part Number Index.....	46	

***This manual supersedes TM 11-610-202-34P, 28 February 1975**

**SECTION I
INTRODUCTION**

1. Scope

This manual lists spares and repair parts; special tools; special test, measurement, and diagnostic equipment (FMDE), and other special support equipment required for performance of organizational, direct support, and general support maintenance of the It authorizes the requisitioning and issue of spares and repair parts as indicated by the source and maintenance codes.

2. General

This Repair Parts and Special Tools List is divided into the following sections:

a. Section II. Repair Parts List. A list of spares and repair parts authorized for use in the performance of maintenance. The list also includes parts which must be removed for replacement of the authorized parts. Parts lists are composed of functional groups in numeric sequence, with the parts in each group listed in figure and item number sequence.

b. Section III. Special Tools List. Not applicable.

c. Section IV. National Stock Number and Part Number Index. A list, in National item identification number (NIIN) sequence, of all National stock number (NSN) appearing in the listings, followed by a list, in alphameric sequence, of all part numbers appearing in the listings. National stock numbers and part numbers are cross-referenced to each illustration figure and item number appearance.

3. Explanation of Columns

a. Illustration. This column is divided as follows:

(1) Figure number. Indicates the figure number of the illustration on which the item is shown.

(2) Item number. The number used to identify item called out in the illustration.

b. Source, Maintenance, and Recoverability (SMR) Codes.

(1) Source code. Source codes indicate the manner of acquiring support items for maintenance, repair, or overhaul of end items. Source codes are entered in the first and second positions of the Uniform SMR Code format as follows:

<i>Code</i>	<i>Definition</i>
PA-	Item procured and stocked for anticipated or known usage.
PC-	Item procured and stocked and which otherwise would be coded PA except that it is deteriorative in nature.

XA- Item is not procured or stocked because the requirements for the item will result in the replacement of the next higher assembly.

XB- Item is not procured or stocked. If not available through salvage, requisition.

NOTE

Cannibalization or salvage may be, used as a source of supply for any items source coded above except those coded XA and aircraft support items as restricted by AR 750-1.

(2) Maintenance code. Maintenance codes are assigned to indicate the levels of maintenance authorized to USE and REPAIR support items. The maintenance codes are entered in the third and fourth positions of the Uniform SMR Code format as follows:

(a) The maintenance code entered in the third position will indicate the lowest maintenance level authorized to remove, replace, and use the support item. The maintenance code entered in the third position will indicate one of the following levels of maintenance:

<i>Code</i>	<i>Application/Explanation</i>
O-	Support item is removed, replaced, used at the organizational level.
F-	Support item is removed, replaced, used at the direct support level.

(b) The maintenance code entered in the fourth position indicates whether the item is to be repaired and identifies the lowest maintenance level with the capability to perform complete repair (i.e., all authorized maintenance functions). This position will contain one of the following maintenance codes:

<i>Code</i>	<i>Application/Explanation</i>
F-	The lowest maintenance level capable of complete repair of the support item is the direct support level.
H-	The lowest maintenance level capable of complete repair of the support item is the general support level.
D-	The lowest maintenance level capable of complete repair of the support item is the depot level.
L-	Repair restricted to designated specialized repair activity.
Z-	Nonreparable. No repair is authorized.

(3) *Recoverability code.* Recoverability codes are assigned to support items to indicate the disposition action on unserviceable items. The recoverability code is entered in the fifth position of the Uniform SMR Code format as follows:

<i>Recoverability codes</i>	<i>Definition</i>
Z-	Nonreparable item. When unserviceable, condemn and dispose at the level indicated in position 3.
F-	Reparable item. When uneconomically repairable, condemn and dispose at the direct support level.
H-	Reparable item. When uneconomically repairable, condemn and dispose at the general support level.
D-	Reparable item. When beyond lower level repair capability, return to depot. Condemnation and disposal not authorized below depot level.
L-	Reparable item. Repair, condemnation, and disposal not authorized below depot/specialized repair activity level.

c. National Stock Number. Indicates the National stock number assigned to the item and will be used for requisitioning purposes.

d. Federal Supply Code for Manufacturer (FSCM).

The FSCM is a 5-digit numeric code listed in SB 708-41/42 which is used to identify the manufacturer, distributor, or Government agency, etc.

e. Part Number. Indicates the primary number used by the manufacturer (individual, company, firm, corporation, or Government activity), which controls the design and characteristics of the item by means of its engineering drawings, specifications, standards, and inspection requirements to identify an item or range of items.

NOTE

When a stock numbered item is requisitioned, the repair part received may have a different part number than the part being replaced.

f. Description. Indicates the Federal item name and, if required, a minimum description to identify the item.

g. Unit of Measure (U/M). Indicates the standard of the basic quantity of the listed item as used in performing the actual maintenance function. This measure is expressed by a two-character alphabetical

abbreviation (e.g., ea, in, pr, etc). When the unit of measure differs from the unit of issue, the lowest unit of issue that will satisfy the required units of measure will be requisitioned.

h. Quantity Incorporated in Unit. Indicates the quantity of the item used in the breakout shown on the illustration figure, which is prepared for a functional group, subfunctional group, or an assembly.

4. Special Information

National stock numbers (NSN's) that are missing from P source coded items have been applied for and will be added to this TM by future change/revision when they are entered in the Army Master Data File (AMDF). Until the NSN's are established and published, submit exception requisitions to: Commander, US Army Communications-Electronics Command and Fort Monmouth, ATTN: DRSEL-MM, Fort Monmouth, New Jersey 07703 for the part required to support your equipment.

5. How to Locate Repair Parts

a. When National stock number or part number is unknown.

(1) *First.* Using the table of contents, determine the functional group within which the item belongs. This is necessary since illustrations are prepared for functional groups and listings are divided into the same groups.

(2) *Second.* Find the illustration covering the functional group to which the item belongs.

(3) *Third.* Identify the item on the illustration and note the illustration figure and item number of the item.

(4) *Fourth.* Using the Repair Parts Listing, find the figure and item number noted on the illustration.

b. When National stock number or part number is known.

(1) *First.* Using the Index of National Stock Numbers and Part Numbers, find the pertinent National stock number or part number. This index is in NIIN sequence followed by a list of part numbers in alphameric sequence, cross-referenced to the illustration figure number and item number.

(2) *Second.* After finding the figure and item number, locate the figure and item number in the repair parts list.

6. Abbreviations

Not applicable.

(Next printed page is 4)

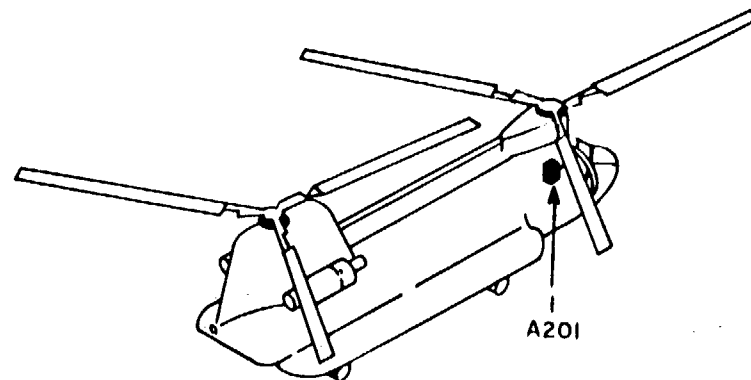
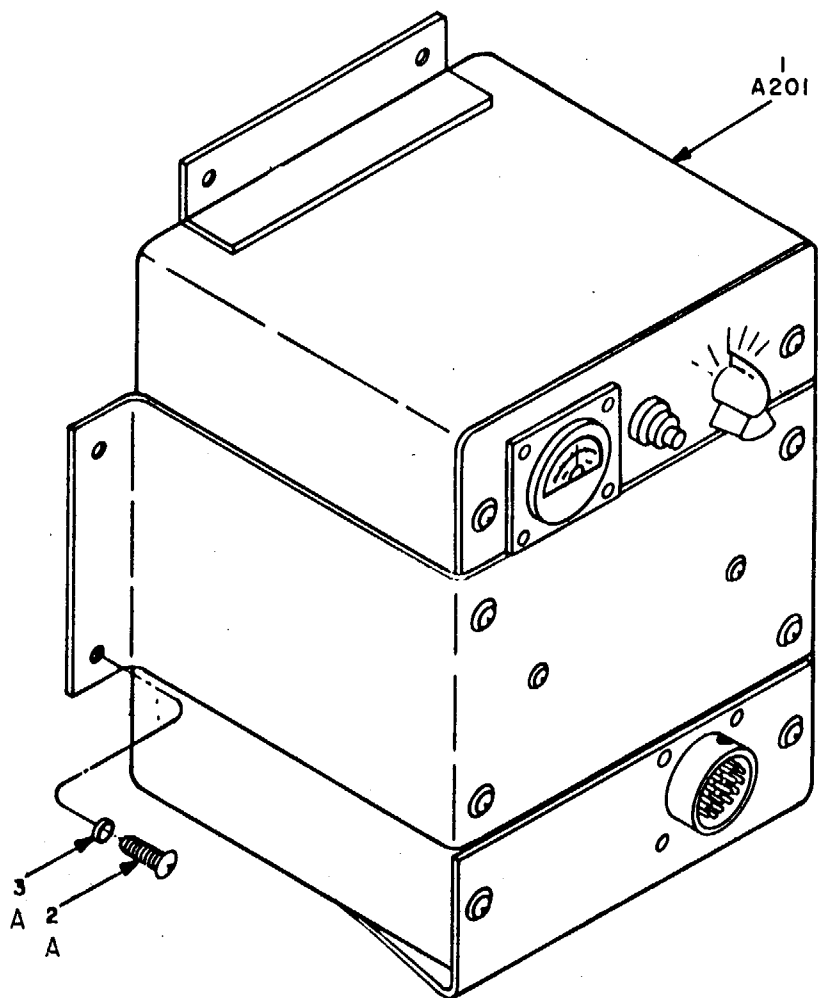
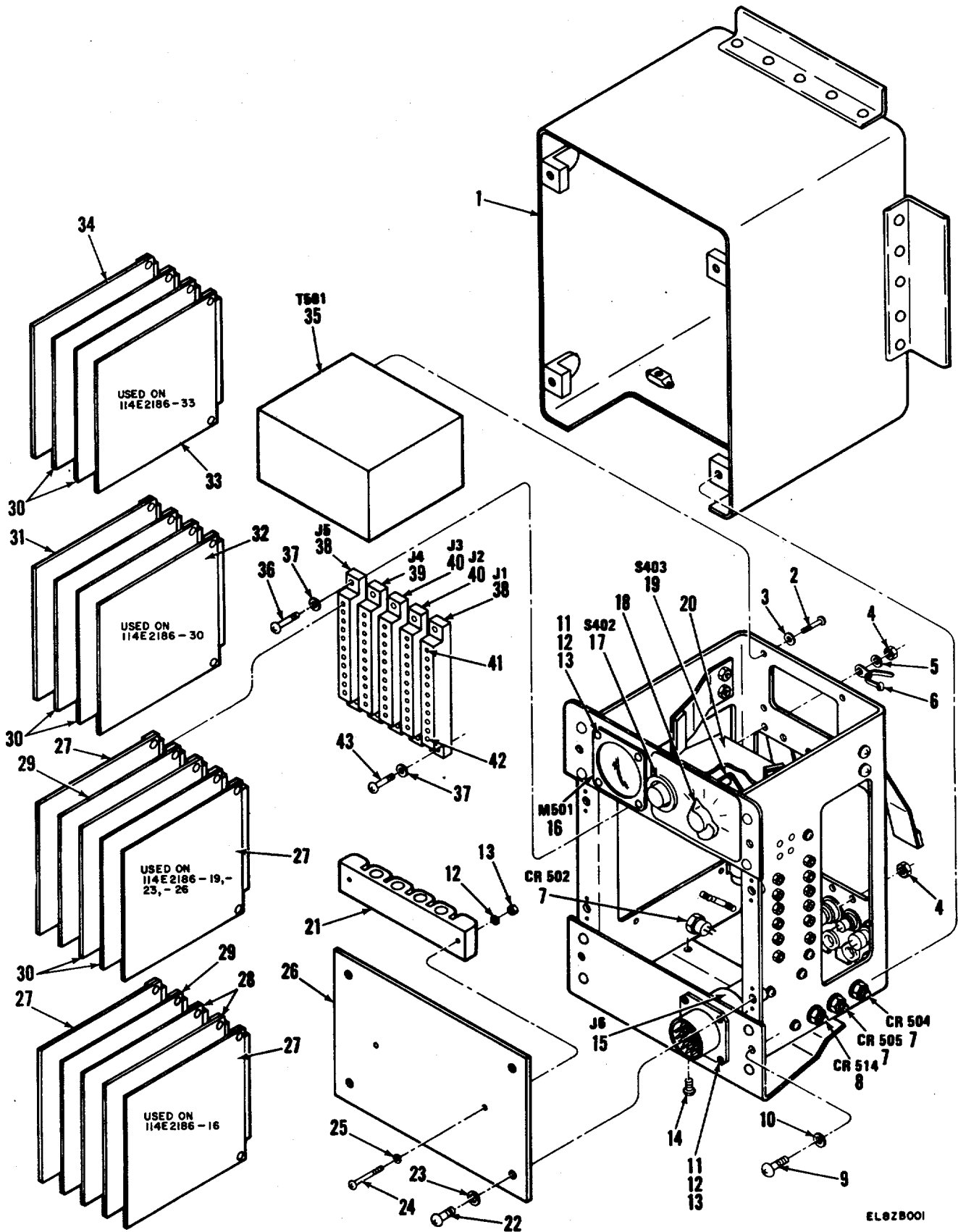


Figure 1. Speed Trim Amplifier 114E2186-16, -19, -23, -26, -30, -33 (Sheet 1 of 3).



EL6ZB001

Figure 1. Speed Trim Amplifier 114E218-16, -19, -23, -26, -30, -33 (Sheet 2 of 3).

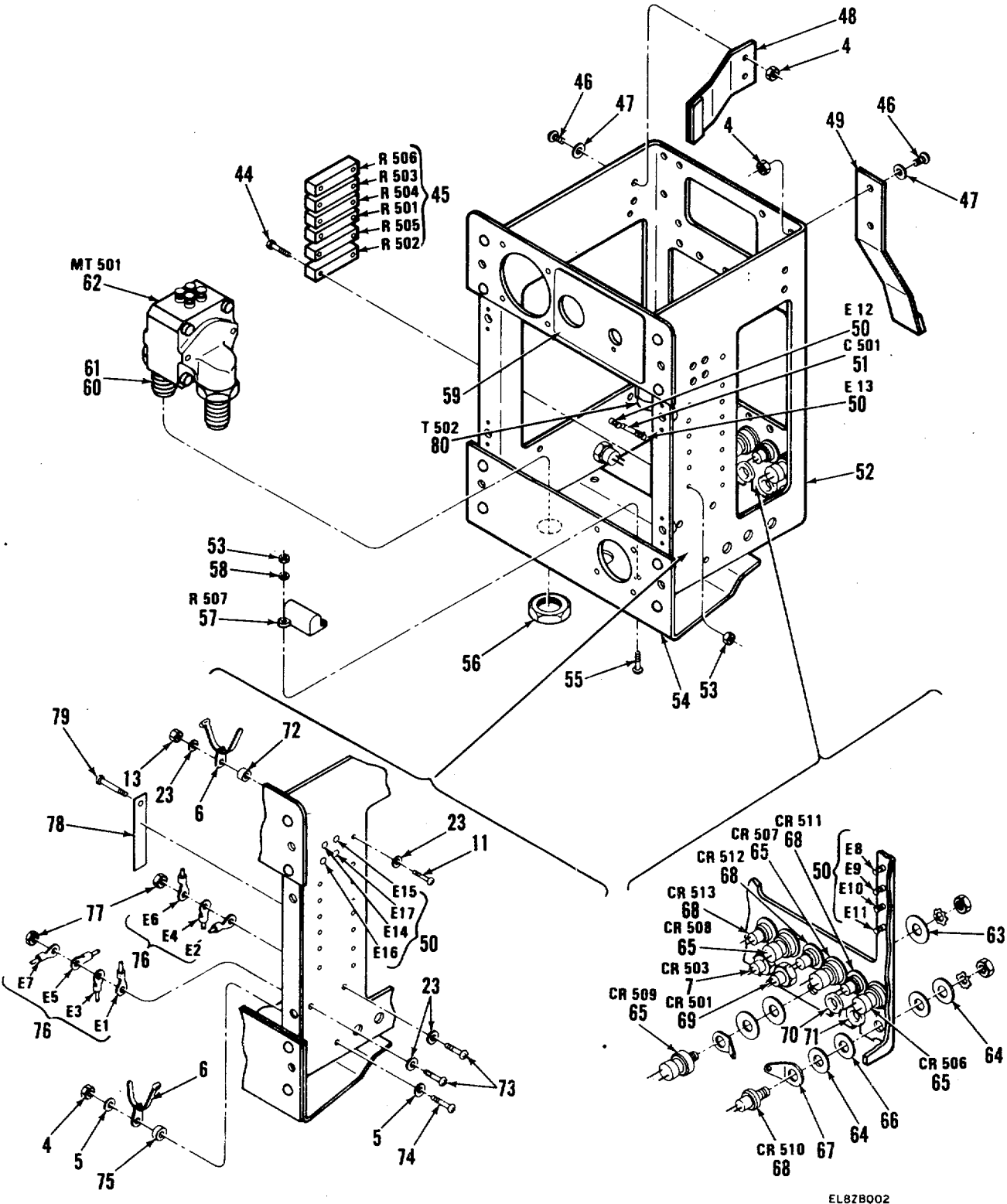


Figure 1. Speed Trim Amplifier 114E218-16, -19, -23, -26, -30, -33 (Sheet 3 of 3)

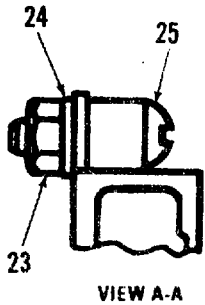
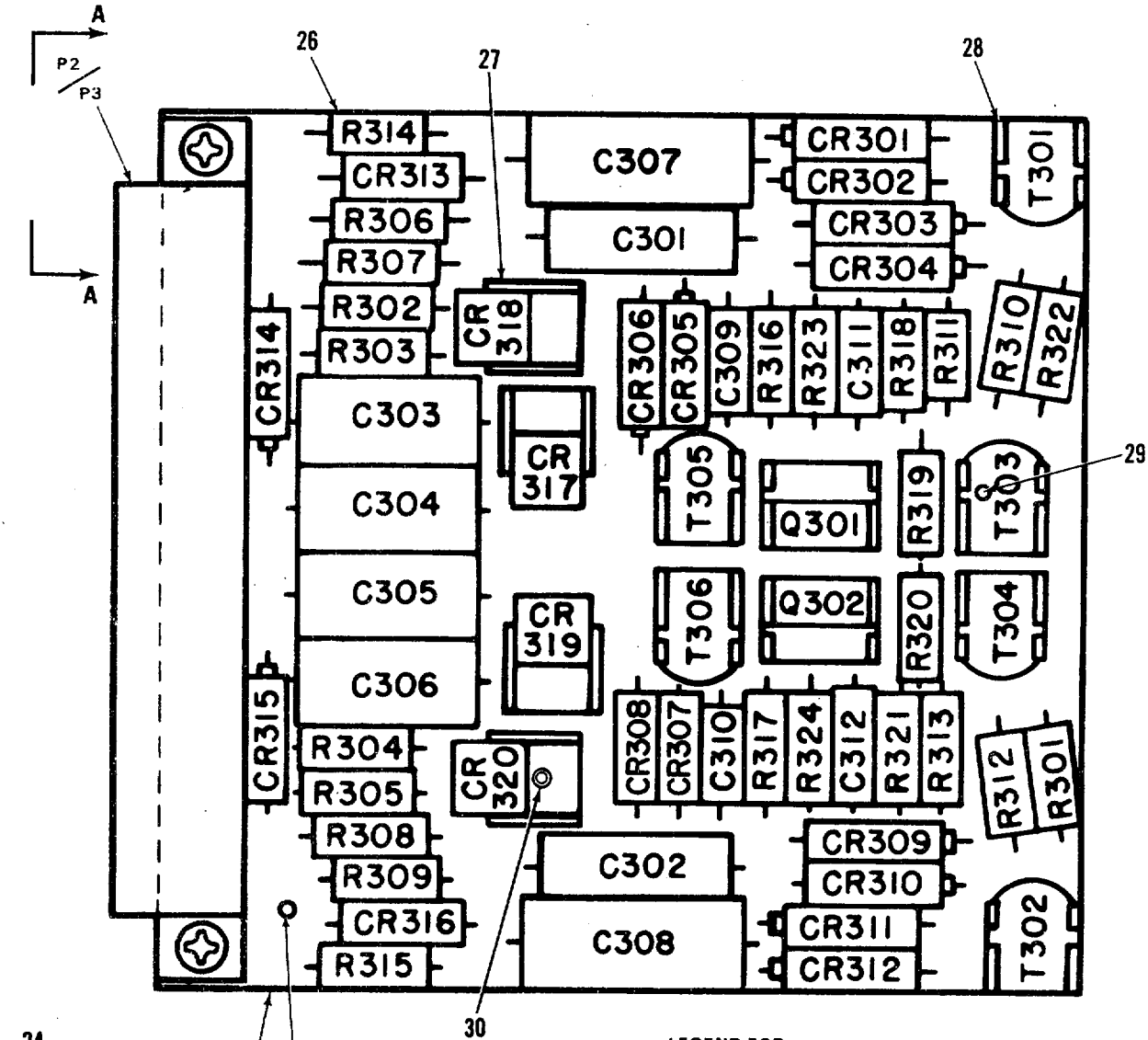
(1) ILLUSTRATION		(2)	(3)	(4)	(5)	(6)	(7)	(8)
(a) FIG NO.	(b) ITEM NO.	SMR CODE	NATIONAL STOCK NUMBER	FSCM	PART NUMBER	DESCRIPTION	USABLE ON CODE	QTY INC U/M IN UNIT
						GROUP 00 SPEED TRIM AMPLIFIER 114E22186-16, -19,-23, -26, -30, -33		
1	1	PAFDD	6610-00-688-9496	77272	114E2186-16	CONTROL ASSEMBLY EFFECTIVITY 59-4982 THRU 64-13113USED ON 2ECEA		1
1	1	PAFDD	1680-00-907-0795	77272	114E2186-19	CONTROL ASSEMBLY EFFECTIVITY 64-13114 THRU 66-19097 USED ON 2EC	EA	1
1	1	PAFDD	1680-00-088-4427	77272	114E2186-23	CONTROL ASSEMBLY EFFECTIVITY 66-19098 THRU 67-18493 USED ON 2ES	EA	1
1	1	PAFDD	6615-00-809-5229	77272	114E2186-26	CONTROL ASSEMBLY EFFECTIVITY 67-18494 THRU 15857 USED ON 5FT AND 2ES	EA	1
1	1	PAFDD	6615-00-179-4966	77272	114E2166-30	CONTROL ASSEMBLY EFFECTIVITY 68-15858 AND SUBQ USED ON 2ES	EA	1
1	1	PAFDD	6615-01-140-8045	77272	114E2186-33	CONTROL ASSEMBLY USED ON 2ES	EA	1
1	1A	XBFFZ		77272	114E2184-9	BOX ASSY USED ON 114E2186-16, -19, -23, -26, -30, -33	EA	1
1	2	PADZZ	5305-00-989-7434	96906	MS35207-263	SCREW, MACHINE	EA	6
1	2A	PAFZZ	5305-00-054-6670	96906	MS51957-45	SCREW, MACHINE USED ON 114E2186-16, -19, -23, -26, -30, -33	EA	4
1	3	PADZZ	5310-00-167-0753	88044	AN960PD10L	WASHER, FLAT	EA	6
1	3A	PAFZZ	5310-00-933-8119	81348	MS35338-137	WASHER, LOCK USED ON 114E2186-16.-19.-23.-26, -30, -3	EA	4
1	4	PAFZZ	5310-00-905-8451	96906	MS21083N06	NUT, SELF-LOCKING, HE USED ON 114E2186-16, -19,-23, -26, -30,-33..	EA	19
1	5	PAFZZ	5310-00-184-8988	88044	AN96006L	WASHER, FLAT USED ON 114E2186-16.-19g-23, -26,-30, -33	EA	7
1	6	PAFZZ	5975-00-825-3330	59730	TY13	STRAP, TIEDOWN, ELECT USED ON 114E2186, -16, -19, -23, -26, -30, -33	EA	9
1	7	PAFZZ		03877	1N1583	RECTIFIER USED ON 114E2186-16.-19, -23, -26, -30,-33	EA	4
1	8	PAFZZ	5961-00-943-4081	98230	ON039200	SEMICONDUCTOR DEVIC USED ON 114E2186-19, -23, -26, -30,-33	EA	1
1	9	PAFZZ	5305-00-840-5299	80205	NAS602-10P	SCREW, MACHINE USED ON 114E2186-16, -19,-23, -26,-30, -33	EA	4
1	10	PAFZZ	5310-00-834-7420	80205	NAS620-8L	WASHER, FLAT USED ON 114E2186-16, -19,-23, -26, -30, -33	EA	4
1	11	PAFZZ	5305-00-339-8802	88044	AN515-4R8	SCREW, MACHINE USED ON 114E2186-16, -19, -23, -26, -30, -33	EA	11
1	12	PAFZZ	5310-00-950-1310	96906	MS27183-4	WASHER, FLAT USED ON 114E2186-6.-19g, -23, -26, 6-30, -33	EA	10
1	13	PAFZZ	5310-00-088-0551	96906	MS21044N04	NUT, SELF-LOCKING, HE USED ON 114E2186-16, -19,-23, -26, -30, -33.	EA	13
1	14	PAFZZ	5305-00-842-0239	80205	NAS602-7P	SCREW, MACHINE USED ON 114E2186-16.-19, -23,-26, -30, -33	EA	2
1	15	XBFFF		77272	114E2186-24	WIRING HARNESS USED ON 114E2186-23, -26	EA	1
1	15	XBFFF		77272	114E2186-31	HARNESS ASSY USED ON 114E2186-30	EA	1
1	15	XBFFF		77272	114E2186-34	HARNESS ASSY USED ON 114E2186-33	EA	1
1	16	PAFZZ		38315	HS10-1MA	METER USED ON 114E2186-16, -19, -23, -26, -30, -33	EA	1
1	17	PAFZZ	5930-00-815-9112	96906	MS25089-3GR	SWITCH, PUSH USED ON 114E2186-16, -19,-23, -26, -30, -33	EA	1
1	18	PAFZZ	5355-00-682-6548	83330	2223	KNOB USED ON 114E216-16.-19,-23, -26, -30, -33	EA	1
1	19	PAFFF	5930-00-089-9518	77272	114E2186-25	SWITCH ASSEMBLY USED ON 114E218623, -26	EA	1
1	19	PAFZZ	5930-00-177-2806	77272	114E2186-32	SWITCH, ROTARY USED ON 114E2186-30, -33	EA	1
1	20	XBFFZ		77272	114E2185-35	ANGLE ASSY USED ON 114E2186-16, -19, -23, -26,-30, -33	EA	1
1	21	XBFFZ	5826-00-877-0556	77272	114E2185-14	GUIDE USED ON 114E2186-16.-19, -23, -26, -30,-33	EA	1
1	22	PAFZZ	5305-00-813-5790	80205	NAS602-6P	SCREW, MACHINE USED ON 114E2186-16.-19, -23,-26, -30,-33	EA	4
1	23	PAFZZ	5310-00-167-0833	88044	AN960-8L	WASHER, FLAT USED ON 114E2186-16, -19,-23,-26,-30, -33	EA	6
1	24	PAFZZ	5305-00-151-1380	88044	AN515-4R10	SCREW, MACHINE USED ON 114E2186-16, -19,-23, -26, -30, -33	EA	2
1	25	PAFZZ	5310-00-167-0831	88044	AN960-4L	WASHER, FLAT USED ON 114E2186-16.-19, -23,-26, -30, -33	EA	8
1	26	PAFZZ	5826-00-877-0580	77272	114E2185-21	COVER, PANEL USED ON 114E2186-16, -19,-23, -26, -30, -33	EA	1
1	27	PAFLL	6615-00-670-7843	77272	107H5001-3	COMPONENT ASSEMBLY USED ON 114E2186-16, -19,-23, -26	EA	1
1	28	PAFFF		77272	114H6000-1	COMPONENT ASSEMBLY	EA	2

(1) ILLUSTRATION		(2)	(3)	(4)	(5)	(6) DESCRIPTION	(7)	(8)
(a) FIG NO.	(b) ITEM NO.	SMR CODE	NATIONAL STOCK NUMBER	FSCM	PART NUMBER	USABLE ON CODE	U/M	QTY INC IN UNIT
1	29	PAFFF		77272	114V4000-1	COMP ASSY CAL USED ON 114E2186-16, -19, -23, -26 (ALT FOR 114V4000-4)	EA	1
1	29	PAFFF	1680-00-937-3462	77272	114V4000-3	ELECTRONIC COMPONEN USED ON 114E2186-16, -19, -23, -26 (ALT FOR 114V4000-4)	EA	1
1	29	PAFFF	1680-00-937-3462	77272	114V4000-4	ELECTRONIC COMPONEN USED ON 114E2186-16, -29, -23, -26.....	EA	1
1	30	PAFFF		77272	114H6000-3	COMP ASSY SERVO AMP USED ON 114E2186-16, -19, -23, -26, -30, -33 ALT FOR 114H6000-4 ON 114E2186-16; ALT FOR 114V4009-2 ON ALL OTHERS.....	EA	2
1	30	PAFFF		77272	114H6000-4	COMP ASSY SERVO AMP USED ON 114E2186-16, -19, -23, -26, -30, -33 (PREFERRED ON 114E2186-16) (ALT FOR 114V4009-2 ON ALL OTHERS)	EA	2
1	30	PAFFF		77272	114H6000-5	COMP ASSY SERVO ASI USED ON 114E2186-19, -19, -26, -30, -33 PREFERRED ALT FOR 114V4009-2 ON 114E2186-23, -26, -30 AND -33	EA	2
1	30	PAFDD	1680-00-908-9169	77272	114V4009-2	ELECTRONIC COMPONEN USED ON 114E2186-19, -23, -26, -30, -33....	EA	2
1	31	PAFDD	6615-00-179-4970	77272	114V4013-1	CIRCUIT CARD ASSEM USED ON 114E2186-30	EA	1
1	32	PAFHH	6615-00-133-7840	77272	107H5001-6	CIRCUIT CARD ASSEM USED ON 114E2186-30	EA	1
1	33	PAFFF		77272	107H5001-8	COMPONENT ASSEMBLY USED ON 114E2186-30, -33.....	EA	1
1	34	PAFDD	6615-01-121-6468	77272	114V4013-3	CIRCUIT CARD ASSEM USED ON 114E2186-30, -33 PREFERRED ON 114E2186-33 ALT FOR 114V4013-1 ON 114E2186-30	EA	1
1	35	PAFZZ	5950-00-053-3714	85323	BX3278	TRANSFORMER, POWER, F USED ON 114E2186-16, -19, -23, -26, -30, -33	EA	1
1	36	PAFZZ	5305-00-866-0934	80802	NAS601-10P	SCREW, MACHINE USED ON 114E2186-16, -19, -23, -26.....	EA	1
1	36	PAFZZ	5305-00-984-4992	88044	AN515-6R12	SCREW, MACHINE USED ON 114E2186-16, -30, -33	EA	1
1	37	PAFZZ	5310-00-616-6822	80205	NAS620-6L	WASHER, FLAT USED ON 114E2186-16, -19, -23, -26, -30, -33.....	EA	10
1	38	PAFZZ	5935-00-980-3927	77272	BACC45HM13	CONNECTOR, RECEPTACL USED ON 114E2186-30, -33	EA	1
1	39	PAFZZ	5935-00-918-6988	81205	BACC45HM12	CONNECTOR BODY, RECE USED ON 114E2186-16, -19, -23, -26.....	EA	1
1	40	PAFZZ	5935-00-909-0469	81205	BACC45HM8	CONNECTOR BODY, RECE USED ON 114E2186-16, -19, -23, -26, -30, -33	EA	2
1	40	PAFZZ	5935-00-451-5555	77272	BACC45HM17	CONNECTOR BODY, RECE USED ON 114E2186-30, -33.....	EA	1
1	41	PAFZZ	5999-00-078-6804	96906	MS3193A20-20A	CONTACT, ELECTRICAL USED ON 114E2186-19, -23, -26 (BACC47BG1 IS AN ALT FOR MS3193A20-20A)	EA	69
1	42	PAFZZ		81205	BACC478F1	POLARIZING KEY, ELEC USED ON 114E2186-19, -23, -26.....	EA	5
1	43	PAFZZ	5305-00-842-0251	80205	NAS601-8P	SCREW, MACHINE USED ON 114E2186-16, -19, -23, -26, -30, -33.....	EA	8
1	44	PAFZZ		88044	AN515-2R8	SCREW, MACHINE USED ON 114E2186-16, -19, -23, -26, -30, -33.....	EA	12
1	45	PAFZZ	5905-00-557-9100	80294	260L1-103	RESISTOR, VARIABLE, W USED ON 114E2186-16, -19, -23, -26, -30, -33	EA	6
1	45	PAFZZ	5905-00-068-5920	81349	RT11C2L103	RESISTOR, VARIABLE, W USED ON 114E2186-16, -19, -23, -26, -30, -33	EA	6
1	46	PAFZZ	5305-00-281-9512	88044	AN515-6R9	SCREW, MACHINE USED ON 114E2186-16, -19, -23, -26, 30, -33.....	EA	8
1	47	PAFZZ	5310-00-167-0738	88044	AN960D6	WASHER, FLAT USED ON 114E2186-16, -19, -23, -26, -30, -33.....	EA	8
1	48	XBFZZ		77272	114E2185-22	STIFFENER ASSY USED ON 114E2186-16, -19, -23, -26, -30, -33.....	EA	2
1	49	XBFZZ		77272	114E2185-24	STIFFENER ASSY USED ON 114E2186-16, -19, -23, -26, -30, -33.....	EA	2
1	50	PAFZZ		06413	102-05R	TERMINAL, STUD USED ON 114E2186-19, -23, -26, -30, -33.....	EA	10
1	51	PAFZZ	5910-00-405-1133	05397	K5N20KN	CAPACITOR, FIXED, ELE USED ON 114E2186-19, -23, -26, -30, -33 (SUB FOR K5N20KNS).....	EA	1
1	51	PAFZZ	5910-00-702-1907	13499	184-8366-000	CAPACITOR, FIXED, ELE USED ON 114E2186-19, -23, -26, -30, -33..... (K5N20KN IS AN ALT FOR K5N20KNS)	EA	1
1	52	XBFFF		77272	114E2184-13	CHASSIS ASSY USED ON 114E2186-19, -23, -26, -30, -33.....	EA	1
1	53	PAFZZ		96906	MS35649-2	NUT USED ON 114E2186-16, -19, -23, -26.....	EA	2

SECTION II

TM 11-6610-202-34P

(1) ILLUSTRATION		(2)	(3)	(4)	(5)	(6) DESCRIPTION	(7)	(8)
(a) FIG NO.	(b) ITEM NO.	SMR CODE	NATIONAL STOCK NUMBER	FSCM	PART NUMBER	USABLE ON CODE	U/M	QTY INC IN UNIT
1	53	PAFZZ	5310-00-207-9364	81205	BACN10DN26	NUT, SELF-LOCKING, HE USED ON 114E2186-9,-23,-26,-30, -33.....	EA	14
1	54	PAFZZ	9905-00-877-0504	77272	114H5505-1	PLATE, IDENTIFICATIO USED ON 114E2186-16,-19,-23,-26, -30, -33.....	EA	1
1	55	PAFZZ	5305-00-989-0682	88044	AN515-2R6	SCREW USED ON 14E2186-19, -23, -26,-30,-33	EA	2
1	56	PAFZZ	5310-00-208-5769	88044	AN924-4	NUT, PLAIN, HEXAGON USED ON 114E2186-16,-19, -23,-26,-30,-33.....	EA	2
1	57	PAFZZ	5905-00-089-9535	81205	BACR14AM202	RESISTOR, FIXED, WIRE USED ON 114E2186-19,-23,-26, -30,-33.....	EA	1
1	58	PAFZZ	5310-00-183-4354	88044	AN960C3L	WASHER, FLAT USED ON 114E2186-19, -23, -26,-30, -33.....	EA	2
1	59	XBFZZ		77272	114H5504-2	PLATE, INST USED ON 114E2186-16, -19, -23, -26(ALB FOR 114H5504-3)	EA	1
1	59	XBFZZ		77272	114H5504-3	PLATE, INST USED ON 114E2186-16, -19, -23,-26, -30, -33.....	EA	1
1	60	PAFZZ		77272	114E2186-21	UNION USED ON L114E2186-16, -19, -23, -26, -30, -33(ALT FOR..... MS21924D4).....	EA	2
1	60	PAFZZ	4730-00-580-9165	96906	MS21924D4	NIPPLE, TUBE USED ON 114E2186-19,-23, -26, -30,-33.....	EA	2
1	61	PAFZZ	5330-00-584-0265	96906	MS28775-012	PACKING, PREFORMED USED ON 114E218-16, -19, -23, -26,-30, -33....	EA	2
1	62	PAFL	6615-00-809-5233	77272	114H5400-4	TRANSDUCER, PRESSURE USED ON 114E2186-16, -19-23,-26,-30,-33	EA	1
1	63	PAFZZ	5310-00-167-0835	88044	AN960-416L	WASHER, FLAT USED ON 114E2186-16, -19,-23, -26,-30, -33.....	EA	8
1	64	PAFZZ	5310-00-167-0812	88044	AN960C10L	WASHER, FLAT USED ON 114E2186-16,-19, -23,-26,-30, -33.....	EA	8
1	65	PAFZZ	5961-00-892-1075	81349	JAN2N686	RECTIFIER USED ON 114E2186-16, -19, -23, -26,-30,-33.....	EA	4
1	66	PAFZZ	5970-00-821-3595	37695	107218-2	INSULATOR, WASHER USED ON 114E2186-16,-19, -23,-26,-30,-33.....	EA	8
1	67	PAFZZ		78452	1423	TERMINAL STUD USED ON 114E2186-16,-19, -23, -26,-30, -33.....	EA	4
1	68	PAFZZ	5961-00-875-7925	80131	2N1602	SEMICONDUCTOR DEVIC USED ON 114E2186-16, -19, -23, -26, -30,-33 (A02VS318-2 AND 107E2321-209 ARE ALTERNATES FOR 2N1602).....	EA	4
1	68	PAFZZ	6130-00-932-1591	77272	107E2321-209	RECTIFIER ASSY USED ON 114E2186-16,-19, -23,-26,-30, -33(ALT FOR 2N1602).....	EA	4
1	69	PAFZZ		01295	1N1820	RECTIFIER USED ON 114E2186-16, -19, -23, -26, -30,-33(1N2984B IS... AN ALT FOR 1N2984B)	EA	1
1	69	PAFZZ		07413	1N2984B	RECTIFIER USED ON 114E2186-16, -19,-23,-26, -30, -31(ALT FOR..... 1N1820)	EA	1
1	70	PAFZZ	5325-00-263-6632	96906	MS35489-6	GROMMET, NONMETALLIC USED ON 114E2186-16,-19,-23, -26,-30, -33	EA	1
1	71	PAFZZ	5325-00-174-5317	96906	MS35489-4	GROMMET, NONMETALLIC USED ON 114E2186-16, -19, -23,-26, -30,-33	EA	1
1	72	PAFZZ	5365-00-580-5317	80205	NAS43DDO-8	SPACER, SLEEVE USED ON 114E2186-16,-19, -23,-26,-30, -33.....	EA	3
1	73	PAFZZ	5305-00-984-6193	88044	AN515-8R8	SCREW, MACHINE USED ON 114E2186-16, -19, -23, -26,-30.....	EA	4
1	74	PAOZZ	5305-00-866-0934	80205	NAS601-10P	SCREW, MACHINE USED ON 114E2186-30,-33	EA	5
1	75	PAFZZ	5365-00-529-9213	80205	NAS43DD1-12	SPACER, SLEEVE USED ON 114E2186-16, -19, -23,-26, -30, -33.....	EA	1
1	76	PAFZZ	5940-00-557-1627	00779	31899	TERMINAL, LUG USED ON 114E2186-16,-19, -23,-26.....	EA	7
1	77	PAFZZ	5310-00-941-6019	96906	MS21083N08	NUT, SELF-LOCKING, HE USED ON 114E2186-16, -19, -23, -26,-30,-33.	EA	2
1	78	XBFZZ		77272	114E2186-10	NAMEPLATE USED ON 114E2186-16, -19, -23, -26,-30,-33(ALT FOR..... BACM10M1BKW).....	EA	1
1	78	XBFZZ		81205	BACM10M1BKW	METAL-CAL USED ON 114E2186-16, -19, -23,-26,-30, -33.....	EA	1
1	79	PAFZZ	5305-00-175-3227	88044	AN535-0-3	SCREW, DRIVE USED ON 114E2186-16,-19, -23,-26,-30,-33.....	EA	2
1	80	PAFZZ	5950-00-950-7706	80223	DOT3	TRANSFORMER, AUDIO F USED ON 114E2186-19,-23,-26,-30,-33.....	EA	1

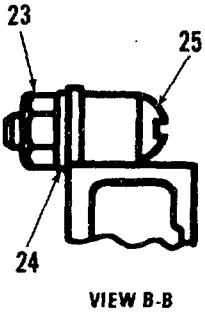
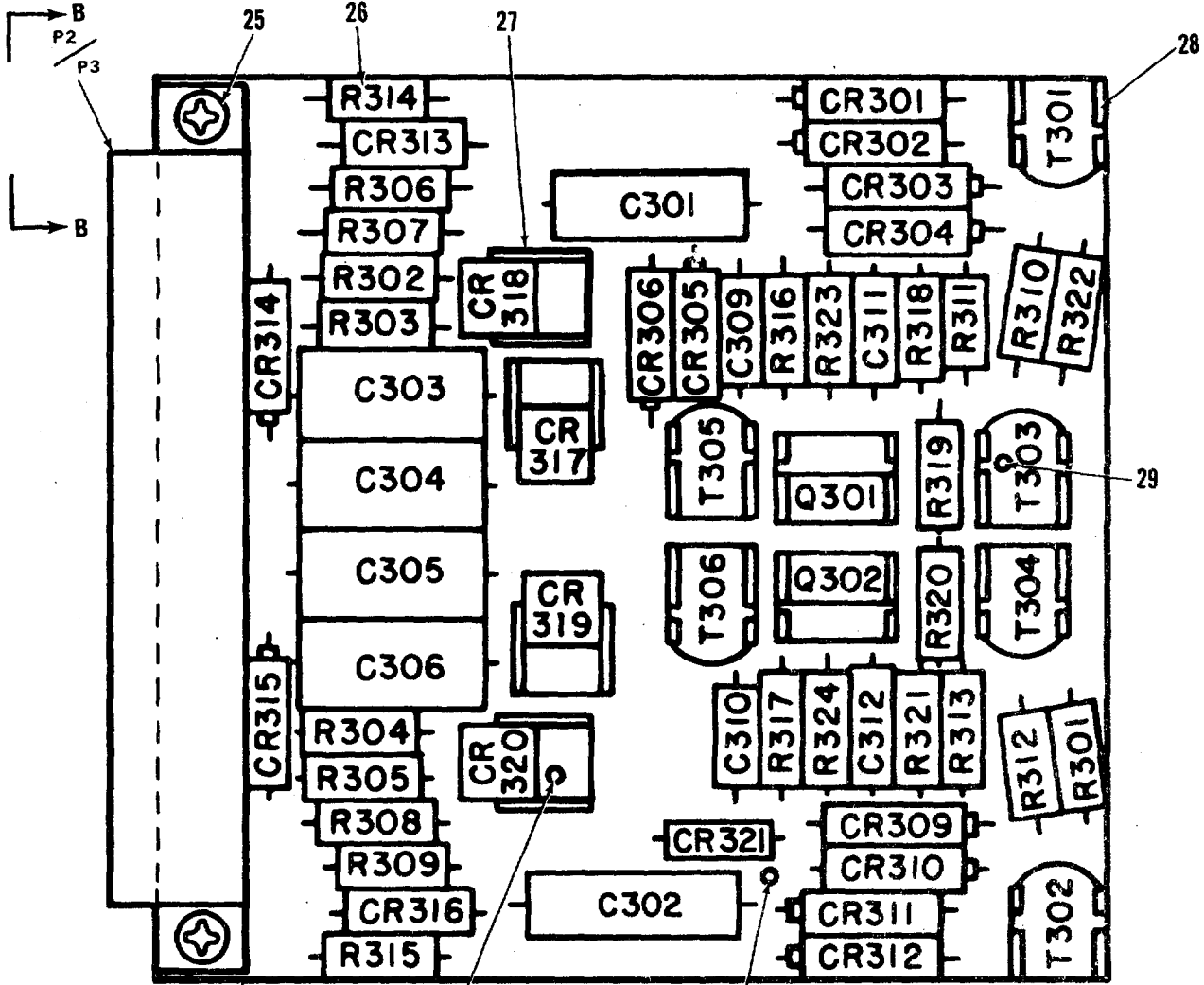


LEGEND FOR 114H6000-1

REF DES	ITEM NO.	REF DES	ITEM NO.	REF DES	ITEM NO.	REF DES	ITEM NO.
CR301	1	C301	3	R305	11	T301	20
CR302	1	C302	3	R306	12	T302	20
CR303	1	C303	4	R307	12	T303	21
CR304	1	C304	4	R308	12	T304	21
CR305	1	C305	4	R309	12	T305	22
CR306	1	C306	4	R310	12	T306	22
CR307	1	C307	5	R311	12		
CR308	1	C308	5	R312	12		
CR309	1	C309	6	R313	12		
CR310	1	C310	6	R314	13		
CR311	1	C311	7	R315	13		
CR312	1	C312	7	R316	15		
CR313	1	P2	8	R317	15		
CR314	1	P3	8	R318	16		
CR315	1	Q301	9	R319	16		
CR316	1	Q302	9	R320	16		
CR317	2	R301	10	R321	16		
CR318	2	R302	11	R322	17		
CR319	2	R303	11	R323	18		
CR320	2	R304	11	R324	18		

EL828003

Figure 2. Servoamplifier 114H6000-1, -2, -3, -4, -5 (Sheet 1 of 3)

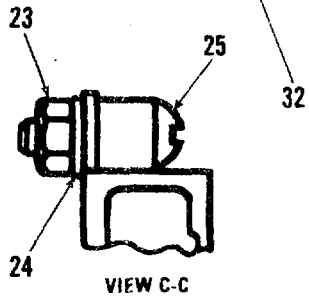
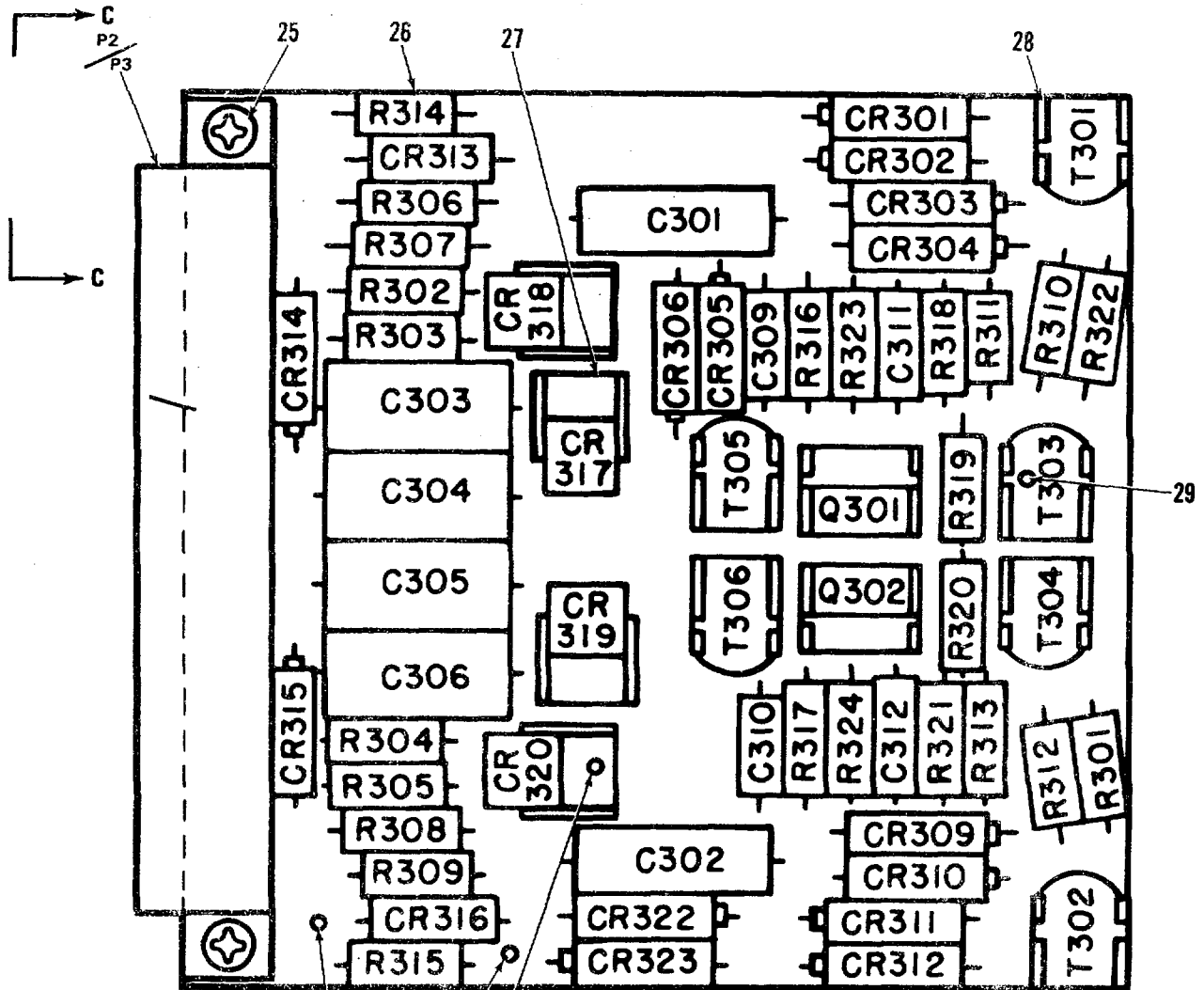


LEGEND FOR 114H6000-2

REF DES	ITEM NO.	REF DES	ITEM NO.	REF DES	ITEM NO.	REF DES	ITEM NO.
CR301	1	C302	3	R308	12	T304	21
CR302	1	C303	4	R309	12	T305	22
CR303	1	C304	4	R310	12	T306	22
CR304	1	C305	4	R311	12		
CR305	1	C306	4	R312	12		
CR306	1	C309	6	R313	12		
CR309	1	C310	6	R314	13		
CR310	1	C311	7	R315	14		
CR311	1	C312	7	R316	15		
CR312	1	P2	8	R317	15		
CR313	1	P3	8	R318	16		
CR314	1	Q301	9	R319	16		
CR315	1	Q302	9	R320	16		
CR316	1	R301	10	R321	16		
CR317	2	R302	11	R322	10		
CR318	2	R303	11	R323	18		
CR319	2	R304	11	R324	18		
CR320	2	R305	11	T301	20		
CR321	1	R306	12	T302	20		
C301	3	R307	12	T303	21		

EL828004

Figure 2. Servoamplifier 114H6000-1, -2, -3, -4, -5 (Sheet 2 of 3)



LEGEND FOR
114H6000-3, -4, -5

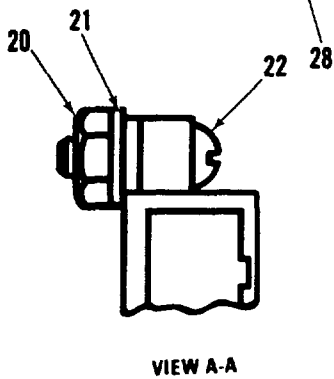
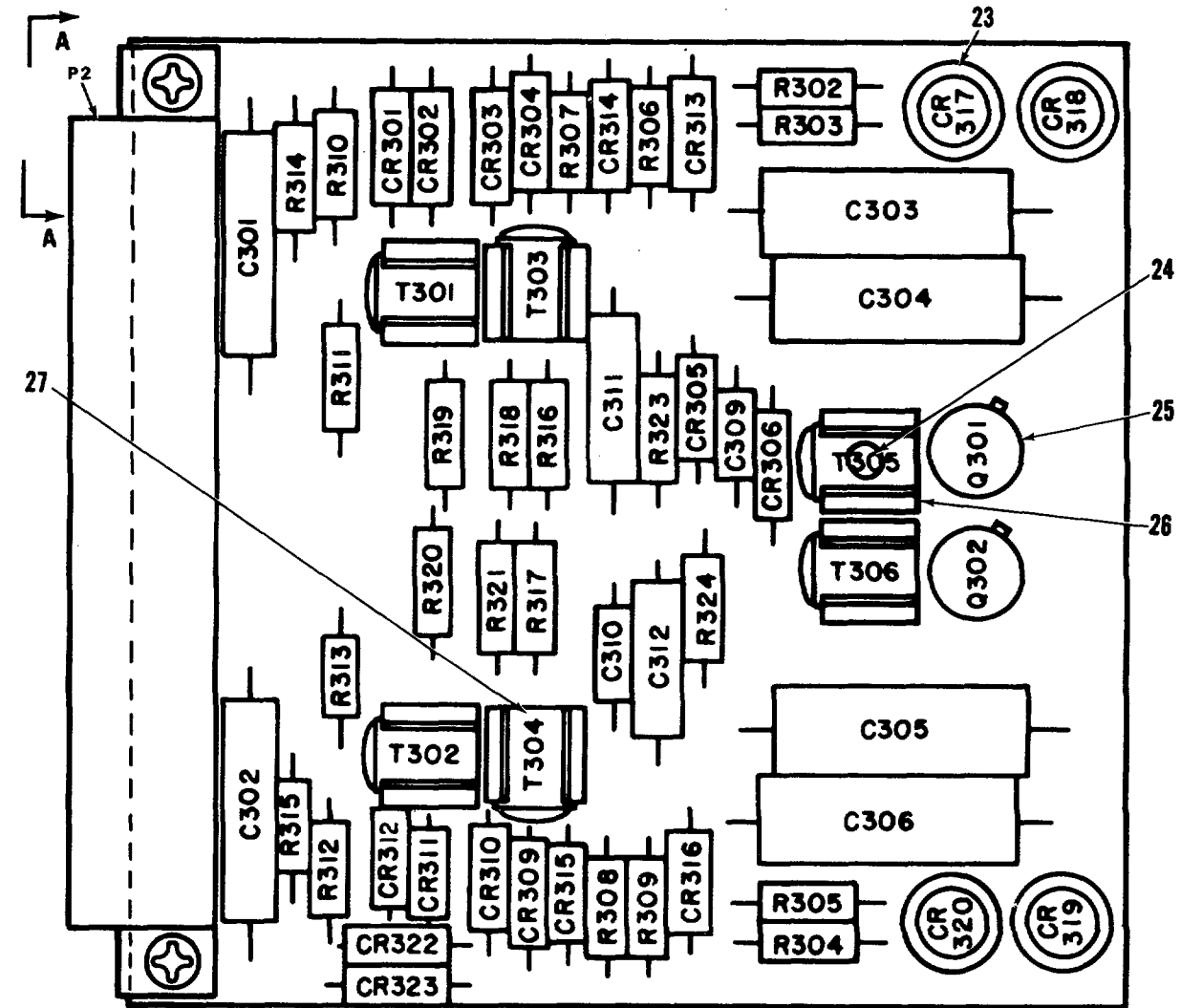
REF DES	ITEM NO.	REF DES	ITEM NO.	REF DES	ITEM NO.	REF DES	ITEM NO.
CR301	1	C301	3	R307	12	T303	21
CR302	1	C302	3	R308	12	T304	21
CR303	1	C303	4	R309	12	T305	22
CR304	1	C304	4	R310	12	T306	22
CR305	1	C305	4	R311	12		
CR306	1	C306	4	R312	12		
CR309	1	C309	6	R313	12		
CR310	1	C310	6	R314	13		
CR311	1	C311	7	R315	14		
CR312	1	C312	7	R316	15		
CR313	1	P2	8	R317	15		
CR314	1	P3	8	R318	16		
CR315	1	Q301	9	R319	16		
CR316	1	Q302	9	R320	16		
CR317	2	R301	10	R321	16		
CR318	2	R302	11	R322	10		
CR319	2	R303	11	R323	18		
CR320	2	R304	11	R324	19		
CR322	1	R305	11	T301	20		
CR323	1	R306	12	T302	20		

EL828005

Figure 2. Servoamplifier 114H6000-1, -2, -3, -4, -5 (Sheet :3 of 3)

(1) ILLUSTRATION		(2)	(3)	(4)	(5)	(6)	(7)	(8)
(a) FIG NO.	(b) ITEM NO.	SMR CODE	NATIONAL STOCK NUMBER	FSCM	PART NUMBER	DESCRIPTION USABLE ON CODE	U/M	QTY INC IN UNIT
2	1	PAFZZ	5961-00-816-1605	81205	BACD5C605	GROUP 01 SERVOAMPLIFIER 114H6000-1, -2, -3,-4, -5 SEMICONDUCTOR DEVIC USED ON 114E2186-19, -23, -26, -30, -33(ALT FOR 1N4608).....	EA	16
2	1	PAFZZ	5961-00-087-6047	81349	1N4608	SEMICONDUCTOR DEVIC USED ON 114E2186-19, -23, -26, -30, -33..... (1N4004 IS AN ALT FOT 1N4608).....	EA	16
2	2	PAFZZ	5961-00-964-6808	03877	2N887	SEMICONDUCTOR DEVICE USED ON 114E2186-16,-19, -23, -26, -30,-33	EA	4
2	3	PAFZZ	5910-00-811-2946	24446	29F585	CAPACITOR, FIXED, ELE USED ON 114E2186-19, -23, -26, -30,-33(U/W 114H6000-2,-3, -4, -5).....	EA	2
2	4	PAFZZ	5910-00-688-2822	81349	CP05A1KB104K3	CAPACITOR, FIXED,PAP USED ON 114E2186-16, -19, -23, -26, -30, -33.	EA	4
2	5	PAFZZ		56289	96P15491S4	CAPACITOR, PAPER USED ON 114E2186-16, (U/W 114H600-1).....	EA	2
2	6	PAFZZ	5910-00-104-0144	56289	150D105X9035A2	CAPACITOR, FIXED, ELE USED ON 114E2186-16, -19, -23, -26, -30, -33	EA	2
2	7	PAFZZ	5910-00-007-2004	56289	150D475X9035B2	CAPACITOR, FIXED, ELE USED ON 114E2186-16, -19, -23,-26, -30, -33.	EA	2
2	8	PAFZZ	5935-00-758-5641	81205	BACC45HL8	CONNECTOR, PLUG, ELEC USED ON 114E2186-16, -19, -23, -26, -30, -33	EA	1
2	9	PAFZZ		81349	JAN2N652A	TRANSISTOR USED ON 114E2186-16,-19, -23, -26,-30,-33.....	EA	2
2	10	PAFZZ	5905-00-814-7885	81205	BACR14CJ100	RESISTOR, FIXED, COMP USED ON 114E2186-19,-23,-26,-30, -33(U/W. 114H6000-2,-3,-4, -5).....	EA	2
2	11	PAFZZ	5905-00-192-3971	81349	RC20GF331J	RESISTOR, FIXED,COMP USED ON 114E2186-16, -19,-23, -26,-30, -33.	EA	4
2	12	PAFZZ	5905-00-110-0196	81349	RCR20G102JS	RESISTOR, FIXED,COMP USED ON 114E2186-16,-19, -23, -26, -30, -33.	EA	A
2	13	PAFZZ	5905-279-3504	81345	RC20GF4725	RESISTOR, FIXED, COMP USED ON 114E2186-16.....	EA	2
2	14	PAFZZ		81205	BACR14CJ393	RESISTOR, FIXED,COMP USED ON 114E2186-19, -23, -26, -30,-33(USED ON 114H6000-2;SELECT AT TEST ON 114H6000-4, -5).....	EA	1
2	14	PAFZZ	5905-00-815-7207	81205	BACR14CJ153	RESISTOR, FIXED, COMP USED ON 114E2186-19,-23, -26, -30, -33(USED ON 114H6000-3;SELECT AT TEST ON 114H6000-4, -5)	EA	1
2	14	PAFZZ	5905-00-846-7271	81205	BACR14CJ243	RESISTOR, FIXED, COMP USED ON 114E2186-19, -23, -26, -30, -33..... (SELECT AT TEST ON 114H6000-4, -5)	EA	1
2	14	PAFZZ		81205	BACR14CJ273	RESISTOR, FIXED, COMP USED ON 114E2186-19,-23, -26, -30, -33..... (SELECT AT TEST ON 114H6000-4, -5)	EA	1
2	14	PAFZZ	5905-00-851-0296	81205	BACR14CJ303	RESISTOR, FIXED, COMP USED ON 114E2186-19,-23, -26, -30, -33..... (SELECT AT TEST ON 114H6000-4, -5)	EA	1
2	14	PAFZZ	5905-00-948-7549	81205	BACR14CJ333	RESISTOR, FIXED, COMP USED ON 114E2186-19, -23, -26,-30, -33..... (SELECT AT TEST ON 114H6000-4, -5)	EA	1
2	14	PAFZZ	5905-00-948-7550	77272	BACR14CJ363	RESISTOR, FIXED, COMP USED ON 114E2186-19, -23, -26, -30, -33..... (SELECT AT TEST ON 114H6000-4, -5)	EA	1
2	14	PAFZZ		81205	BACR14CJ433	RESISTOR, FIXED, COMP USED ON 114E2186-19,-23, -26, -30, -33..... (SELECT AT TEST ON 114H6000-4, -5)	EA	1
2	14	PAFZZ	5905-00-814-7895	81205	BACR14CJ473	RESISTOR, FIXED, COMP USED ON 114E2186-9, -23, -26, -30, -33..... (SELECT AT TEST ON 114H6000-4,-5)	EA	1
2	14	PAFZZ		81205	BACR14CJ563	RESISTOR, FIXED, COMP USED ON 114E2186-19,-23,-26, -30,-33..... (SELECT AT TEST ON 114H6000-4, -5)	EA	1
2	14	PAFZZ	5905-00-948-7543	77272	BACR14CJ623	RESISTOR, FIXED, COMP USED ON 114E2186-19,-23,-26, -30, -33..... (SELECT AT TEST ON 114H6000-4,-5)	EA	1
2	14	PAFZZ	5905-00-814-7900	81205	BACR14CJ822	RESISTOR, FIXED, COMP USED ON 114E2186-19, -23,-26, -30, -33..... (SELECT AT TEST ON 114H6000-4, -5).....	EA	1
2	14	PAFZZ		81205	BACR14CJ912	RESISTOR, FIXED, COMP USED ON 114E2186-19, -23, -26, -30,-33..... (SELECT AT TEST ON 114H6000-4, -5)	EA	1
2	14	PAFZZ	5905-00-814-7596	81205	BACR14CJ103	RESISTOR, FIXED, COMP USED ON 114E2186-19,-23, -26, -30, -33..... (SELECT AT TEST ON 114H6000-4, -5)	EA	1
2	14	PAFZZ	5905-00-950-6780	77272	BACR14CJ113	RESISTOR, FIXED, COMP USED ON 114E2186-19,-23,-26, -30, -33..... (SELECT AT TEST ON 114H6000-4, -5)	EA	1

(1) ILLUSTRATION		(2)	(3)	(4)	(5)	(6)	(7)	(8)
(a) FIG NO.	(b) ITEM NO.	SMR CODE	NATIONAL STOCK NUMBER	FSCM	PART NUMBER	DESCRIPTION USABLE ON CODE	U/M	QTY INC IN UNIT
2	14	PAFZZ		81205	BACR14CJ123	RESISTOR, FIXED, COMP USED ON 114E2186-19,-23, -26, -30, -33..... (SELECT AT TEST ON 114H6000-4, -5).....	EA	1
2	14	PAFZZ	5905-00-018-0860	81205	BACR14CJ133	RESISTOR, FIXED, COMP USED ON 114E2186-19, -23,-26, -30,-33..... (SELECT AT TEST ON 114H6000-4, -5).....	EA	1
2	14	PAFZZ		81205	BACR14CJ163	RESISTOR, FIXED, COMP USED ON 114E2186-19, -23,-26, -30,-33..... (SELECT AT TEST ON 114H6000-4,-5).....	EA	1
2	14	PAFZZ		81205	BACR14CJ183	RESISTOR, FIXED, COMP USED ON 114E2186-19, -23, -26, -30, -33..... (SELECT AT TEST ON 114H6000-4, -5).....	EA	1
2	14	PAFZZ		81205	BACR14CJ203	RESISTOR, FIXED, COMP USED ON 114E2186-19,-23, -26, -30, -33..... (SELECT AT TEST ON 114H6000-4, -5).....	EA	1
2	14	PAFZZ		81205	BACR14CJ223	RESISTOR, FIXED, COMP USED ON 114E2186-19, -23, -26,-30,-33..... (SELECT AT TEST ON 114H6000-4, -5).....	EA	1
2	15	PAFZZ	5905-00-279-3506	81349	RC20GF332J	RESISTOR, FIXED, COMP USED ON 114E2186-16, -19,-23, -26, -30, -33	EA	2
2	16	PAFZZ	5905-00-185-8510	81349	RC20GF103J	RESISTOR, FIXED, COMP USED ON 114E2186-16, -19,-23, -26,-30, -33.	EA	4
2	17	PAFZZ	5905-01-056-8196	01121	RC20GF2235	RESISTOR, FIXED, COMP USED ON 114E2186-16 (U/W 114H6000-1)....	EA	2
2	18	PAFZZ	5905-00-252-4018	81349	RC20GF470J	RESISTOR, FIXED, COMP USED ON 114E2186-19, -23,-26, -30,-33(U/W 114H6000-3, -4, -5).....	EA	1
2	19	PAFZZ	5905-00-948-7568	77272	BACR14CJ161	RESISTOR, FIXED, COMP (U/W 114H6000-3, -4, -5)	EA	1
2	20	PAFZZ	5950-00-755-9203	80223	DOT11	TRANSFORMER, AUDIO F USED ON 114E2186-16,-19,-23, -26,-30, -33.	EA	2
2	21	PAFZZ	5950-00-799-4163	30003	247AS-C1526	TRANSFORMER, AUDIO F USED ON 114E2186-16,-19, -23, -26,-30, -33	EA	2
2	22	PAFZZ	5950-00-952-8406	80223	DOT45	TRANSFORMER, AUDIO F USED ON 114E2186-16,-19, -23, -26,-30, -33	EA	2
2	23	PAFZZ	5310-00-905-8451	96906	MS21083N06	NUT, SELF-LOCKING, HE USED ON 114E2186-19,-23, -26, -30,-33	EA	2
2	24	PAFZZ	5365-00-820-4382	80205	NAS43DD1-5	SPACER, SLEEVE USED ON 114E2186-16, -19,-23, -26, -30,-33	EA	2
2	25	PAFZZ	5305-00-842-0251	80205	NAS601-8P	SCREW, MACHINE USED ON 114E2186-16, -19,-23, -26, -30,-33	EA	2
2	26	XBFFF		77272	114H6002-3	BOARD, SUB ASSY USED ON 114E2186-16, -19,-23, -26, -30,-33(U/W .. 114H6000-3)	EA	1
2	26	XBFFF		77272	114H6002-4	BOARD SUB ASSY USED ON 114E2186-19,-23, -26, -30, -33.....	EA	1
2	27	PAFZZ	5340-00-776-2134	99378	100-200-1-2	CLIP, SPRING TENSION USED ON 114E2186-19, -23,-26, -30, -33.....	EA	4
2	28	PAFZZ	5340-00-826-6993	99378	100-239-0	CLIP, SPRING TENSION USED ON 114E2186-19,-23, -26, -30,-33.....	EA	1
2	29	XBFFF		71279	X20998	RIVET USED ON 114E2186-19, -23, -26,-30,-33	EA	8
2	30	PAFZZ		88245	760287	EYELET USED ON 114E2186-19, -23, -26, -30,-33	EA	4
2	31	PAFZZ	5940-00-082-4869	81349	SE12XC01	TERMINAL, STUD USED ON 114E2186-19,-23, -26, -30, -33.....	EA	1
2	32	XAFZZ		77272	114H6004-2	BOARD PRINTED CRT USED ON 114E2186-19, -23,-26, -30,-33(U/W 114H6002-3, -4)	EA	1



LEGEND FOR
114V4009-2

REF DES	ITEM NO.	REF DES	ITEM NO.	REF DES	ITEM NO.	REF DES	ITEM NO.
CR301	1	C301	3	R309	10	T306	19
CR302	1	C302	3	R310	10		
CR303	1	C303	4	R311	10		
CR304	1	C304	4	R312	10		
CR305	1	C305	4	R313	10		
CR306	1	C306	4	R314	11		
CR309	1	C309	5	R315	12		
CR310	1	C310	5	R316	13		
CR311	1	C311	6	R317	13		
CR312	1	C312	6	R318	14		
CR313	1	P2	7	R319	14		
CR314	1	Q301	8	R320	14		
CR315	1	Q302	8	R321	14		
CR316	1	R302	9	R322	15		
CR317	2	R303	9	R324	16		
CR318	2	R304	9	T301	17		
CR319	2	R305	9	T302	17		
CR320	2	R306	10	T303	18		
CR322	1	R307	10	T304	18		
CR323	1	R308	10	T305	19		

EL828006

Figure 3. Servoamplifier 114V4009-2.

SECTION II

TM 11-6610-202-34P

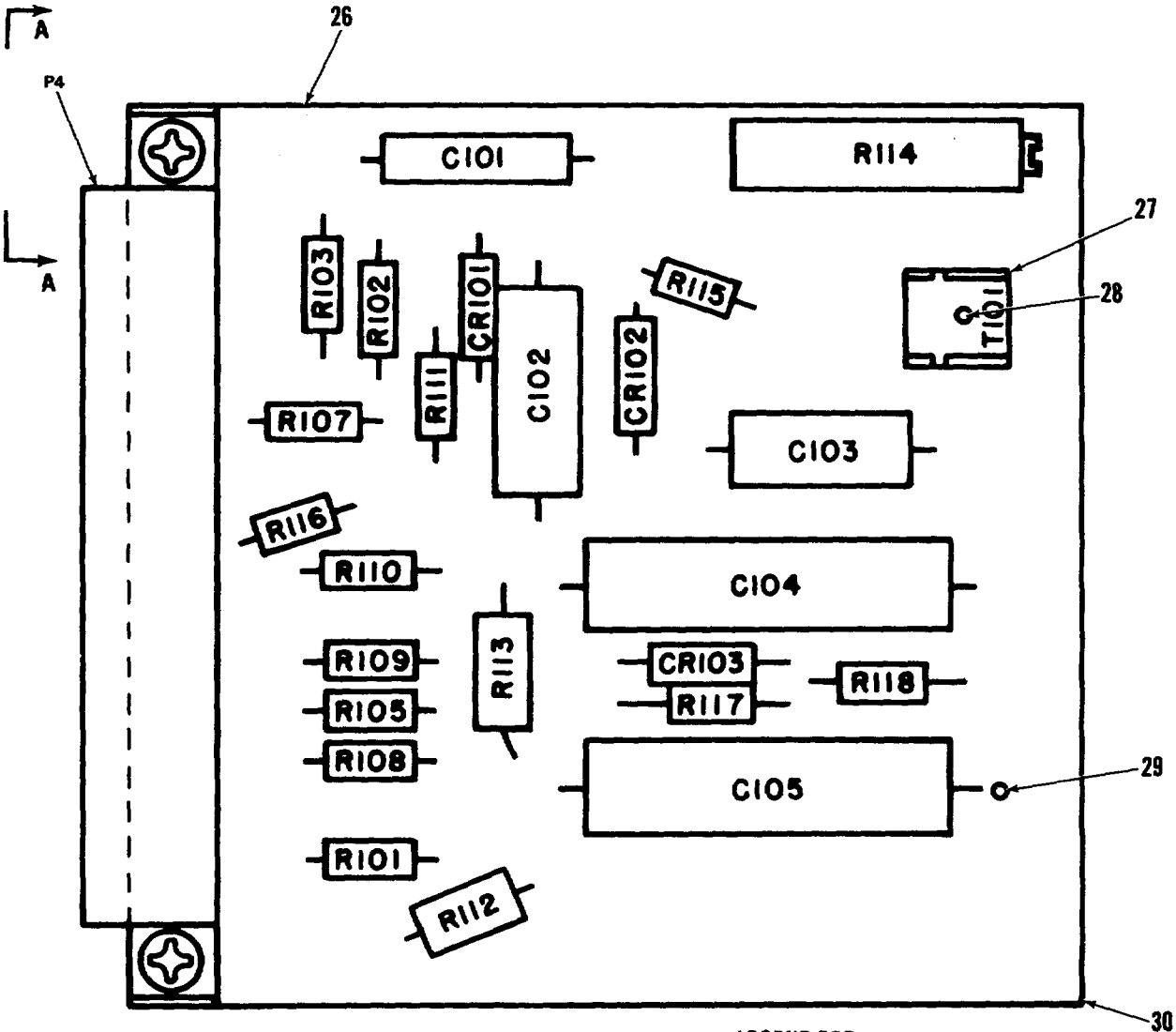
(1) ILLUSTRATION		(2)	(3)	(4)	(5)	(6)	(7)	(8)
(a) FIG NO.	(b) ITEM NO.	SMR CODE	NATIONAL STOCK NUMBER	FSCM	PART NUMBER	DESCRIPTION USABLE ON CODE	U/M	QTY INC IN UNIT
						GROUP 02 SERVOAMPLIFIER 114V4009-2		
3	1	PAFZZ	5961-00-087-6047	81349	JAN1N645	SEMICONDUCTOR DEVIC USED ON 114E2186-19, -23,-26, -30, -..... 33(1N4004 IS AN ALT FOR IN4608).....	EA	16
3	2	PAFZZ	5961-00-777-0925	81349	JAN2N2326A	TRANSISTOR USED ON 114E2186-19, -23, -26, -30, -33.....	EA	4
3	3	PAFZZ		95017	29F585G4	CAPACITOR, SOLID USED ON 114E2186-19, -23, -26, -30, -33.....	EA	2
3	4	PAFZZ	5910-00-688-2822	81349	CP05A1KB104-K3	CAPACITOR, FIXED, PAP USED ON 114E2186-19, -23, -26, -30, -33.....	EA	4
3	5	PAFZZ	5910-00-104-0144	56289	150D105X9035-A2	CAPALITOR, FIXED, ELE USED ON 114E2186-19, -23, -26, -30, -33.....	EA	2
3	6	PAFZZ	5910-00-007-2004	56289	150D475X9035-B2	CAPACITOR, FIXED, ELE USED ON 114E2186-19, -23, -26, -30, -33.....	EA	2
3	7	PAFZZ	5935-00-758-5641	81205	BACC45HL8	CONNECTOR, PLUG, ELEC USED ON 114E2186-19, -23, -26, -30, -33..	EA	1
3	8	PAFZZ	5961-00-124-5019	34148	2N4033	TRANSISTOR USED ON 114E2186-19, -23, -26, -30, -33.....	EA	2
3	9	PAFZZ		81205	BACRL4CJ331	RESISTOR, FIXED, COMP USED ON 114E2186-19, -23, -26, -30, -33	EA	4
3	10	PAFZZ	5905-00--81-7595	81205	BACR14CJ102	RESISTOR, FIXED, COMP USED ON 114E2186-19, -23, -26, -30, -33	EA	8
3	11	PAFZZ		81205	BACR14CJ472	RESISTOR, FIXED, COMP USED ON 114E2186-19, -23, -26, -30, -33.....	EA	1
3	12	PAFZZ		81205	BACR14CJ393	RESISTOR, FIXED, COMP USED ON 114E2186-19, -23, -26, -30, -..... 33(SELECT AT TEST)	EA	1
3	12	PAFZZ	5905-00-846-7271	81205	BACR14CJ243	RESISTOR, FIXED, COMP USED ON 114E2186-19, -23, -26, -30, -..... 33(SELECT AT TEST)	EA	1
3	12	PAFZZ		81205	BACR14CJ273	RESISTOR, FIXED, COMP USED ON 114E2186-191-23, -26, -30, -..... 33(SELECT AT TEST)	EA	1
3	12	PAFZZ	5905-00-935-8542	81349	RCR20G303JS	RESISTOR, FIXED, COMP USED ON 114E2186-19, -23, -26, -30, -..... 33(SELECT AT TEST)	EA	1
3	12	PAFZZ	5905-00-948-7549	81205	BACR14CJ333	RESISTOR, FIXED, COMP USED ON 114E2186-19, -23, -26, -30, -..... 33(SELECT AT TEST)	EA	1
3	12	PAFZZ	5905-00-948-7550	77272	BACR14CJ363	RESISTOR, FIXED, COMP USED ON 114E2186-19, -23, -26, -30, -..... 33(SELECT AT TEST)	EA	1
3	12	PAFZZ		81205	BACR14CJ433	RESISTOR, FIXED, COMP USED ON 114E2186-19, -23, -26, -30, -..... 33(SELECT AT TEST)	EA	1
3	12	PAFZZ	5905-00-814-7895	81205	BACR14CJ473	RESISTOR, FIXED, COMP USED ON 1142E186-19, -23, -26, -30, -..... 33(SELECT AT TEST)	EA	1
3	12	PAFZZ		81205	BACR14CJ513	RESISTOR, FIXED, COMP USED ON 114E2186-19, -23, -26, -30, -..... 33(SELECT AT TEST)	EA	1
3	12	PAFZZ		81205	BACR14CJ563	RESISTOR, FIXED, COMP USED ON 114E2186-19, -23, -26, -30, -..... 33(SELECT AT TEST)	EA	1
3	12	PAFZZ	5905-00-948-7543	77272	BACR14CJ623	RESISTOR, FIXED,COMP USED ON 114E2186-19, -23,-26, -30, -..... 33(SELECT AT TEST)	EA	1
3	12	PAFZZ	5905-00-814-7900	81205	BACR14CJ822	RESISTOR, FIXED, COMP USED ON 114E2186-19, -23, -26, -30, -..... 33(SELECT AT TEST)	EA	1
3	12	PAFZZ		81205	BACR14CJ912	RESISTOR, FIXED, COMP USED ON 114E2186-19, -23, -26, -30, -..... 33(SELECT AT TEST)	EA	1
3	12	PAFZZ	5905-00-814-7596	81205	BACR14CJ103	RESISTOR, FIXED, COMP USED ON 114E2186-19, -23, -26, -30, -..... 33(SELECT AT TEST)	EA	1
3	12	PAFZZ		81205	BACR14CJ123	RESISTOR, FIXED, COMP USED ON 114E218619, -23, -26, -30, -..... 33(SELECT AT TEST)	EA	1
3	12	PAFZZ	5905-00-018-0860	81205	BACR14CJ133	RESISTOR, FIXED, COMP USED ON 114E2186-19, -23, -26, -30, -..... 33(SELECT AT TEST)	EA	1
3	12	PAFZZ	5905-00-815-7207	81205	BACR14CJ153	RESISTOR, FIXED, COMP USED ON 114E2186-19, -23, -26, -30, -..... 33(SELECT AT TEST)	EA	1
3	12	PAFZZ		81205	BACR14CJ163	RESISTOR, FIXED, COMP USED ON 114E2186-19, -23, -26, -30, -..... 33(SELECT AT TEST)	EA	1

(1) ILLUSTRATION		(2)	(3)	(4)	(5)	(6)	(7)	(8)
(a) FIG NO.	(b) ITEM NO.	SMR CODE	NATIONAL STOCK NUMBER	FSCM	PART NUMBER	DESCRIPTION	U/M	QTY INC IN UNIT
						USABLE ON CODE		
3	12	PAFZZ		81205	BACR14CJ183	RESISTOR, FIXED, COMP USED ON 114E2186-19, -23, -26, -30, -..... 33(SELECT AT TEST)	EA	1
3	12	PAFZZ		81205	BACR14CJ203	RESISTOR, FIXED, COMP USED ON 114E2186-19, -23, -26, -30, -..... 33(SELECT AT TEST)	EA	1
3	12	PAFZZ		81205	BACR14CJ223	RESISTOR, FIXED, COMP USED ON 114E2186-19, -23, -26, -30, -..... 33(SELECT AT TEST)	EA	1
3	13	PAFZZ		81205	BACR14CJ332	RESISTOR, FIXED, COMP USED ON 114E2186-19, -23, -26, -30, -33.....	EA	2
3	14	PAFZZ	5905-00-814-7596	81205	BACR14CJ103	RESISTOR, FIXED, COMP USED ON 114E2186-19, -23, -26, -30, -33	EA	4
3	15	PAFZZ		81349	RCR20G160JP	RESISTOR, FIXED, COMP USED ON 114E2186-19, -23, -26, -30, -..... 33(SELECT AT TEST)	EA	1
3	15	PAFZZ	5905-00-114-5381	81349	RCR20G180JS	RESISTOR, FIXED, COMP USED ON 114E2186-19, -23, -26, -30, -..... 33(SELECT AT TEST)	EA	1
3	15	PAFZZ	5905-00-113-4856	81349	RCR20G200JS	RESISTOR, FIXED, COMP USED ON 114E2186-19, -23, -26, -30, -..... 33(SELECT AT TEST)	EA	1
3	15	PAFZZ	5905-00-114-5388	81349	RCR20G220JS	RESISTOR, FIXED, COMP USED ON 114E2186-19, -23, -26, -30, -..... 33(SELECT AT TEST)	EA	1
3	15	PAFZZ	5905-00-435-1720	81349	RCR20G240JS	RESISTOR, FIXED, COMP USED ON 114E2186-19, -23, -26, -30, -.....	EA	1
3	15	PAFZZ	5905-00-116-8561	81349	RCR20G230JS	RESISTOR, FIXED, COMP USED ON 114E2186-19, -23, -26, -30, -..... 33(SELECT AT TEST)	EA	1
3	15	PAFZZ	5905-00-935-8540	81349	RCR20G300JS	RESISTOR, FIXED, COMP USED ON 114E2186-19, -23, -26, -30, -..... 33(SELECT AT TEST)	EA	1
3	15	PAFZZ	5905-00-935-8543	81349	RCR20G330JS	RESISTOR, FIXED, COMP USED ON 114E2186-19, -23, -26, -30, -..... 33(SELECT AT TEST)	EA	1
3	15	PAFZZ		81349	RCR20G360JP	RESISTOR, FIXED, COMP USED ON 114E2186-19, -23, -26, -30, -..... 33 (SELECT AT TEST)	EA	1
3	15	PAFZZ	5905-00-40-4502	81349	RCR20G430JS	RESISTOR, FIXED, COMP USED ON 114E218-19, -23, -26, -30, -..... 33(SELECT AT TEST)	EA	1
3	15	PAFZZ	5905-00-111-4734	81349	RCR20G470JP	RESISTOR, FIXED, COMP USED ON 114E2186-19, -23, -26, -30, -..... 33(SELECT AT TEST)	EA	1
3	15	PAFZZ	5905-00-114-5438	81349	RCR20G510JS	RESISTOR, FIXED, COMP USED ON 114E2186-19, -23, -26, -30, -..... 33(SELECT AT TEST)	EA	1
3	15	PAFZZ	5905-00-104-8345	81349	RCR20G560JS	RESISTOR, FIXED, COMP USED ON 114E2186-19, -23, -26, -30, -..... 33(SELECT AT TEST)	EA	1
3	16	PAFZZ	5905-00-948-7568	77212	BACR14CJ16L	RESISTOR, FIXED, COMP USED ON 114E2186-19, -23, -26, -30, -33.....	EA	1
3	17	PAFZZ	5950-00-755-9203	80223	DOT11	TRANSFORMER, AUDIO F USED ON 114E2186-19, -23, -26, -30, -33.....	EA	2
3	18	PAFZZ	5950*00-799-4163	30003	247AS-C1526	TRANSFORMER, AUDIO F USED ON 114E2186-19, -23, -26, -30, -33.....	EA	2
3	19	PAFZZ	5950-00-952-8406	80223	DOT45	TRANSFORMER, AUDIO F USED ON 114E2186-19, -23, -26, -30, -33.....	EA	2
3	20	PAFZZ	5310-00-081-8087	96906	MS21044N06	NUT, SELF-LOCKING, HE USED ON 114E2186-19, -23, -26, -30, -33.....	EA	2
3	21	PAFZZ	5310-00-167-0832	88044	AN960-6L	WASHER, FLAT USED ON 114E2186-19, -23, -26, -30, -33.....	EA	2
3	22	XBFZZ		57171	GS4-11 EYELET USED ON 114E2186-19, -23, -26, -30, -33(ALT METHOD OF ATTACHMENT)	EA	2
3	22	PAFZZ	5305-00-866-0934	80802	NAS601-10P	SCREW, MACHINE USED ON 114E2186-16, -30, -33.....	EA	2
3	23	PAFZZ	5999-00-909-0522	81205	BACP50A4	MOUNTING PAD, ELECTR USED ON 114E2186-19, -23, -26, -30, -33.....	EA	4
3	24	XBFZZ		71279	2099-2-02	RIVET USED ON 114E2186-19, -23, -26, -30, -33.....	EA	6
3	25	PAFZZ	5999-00-738-6013	81205	BACP50A3	MOUNTING PAD, ELECTR USED ON 114E2186-19, -23, -26, -30, -33.....	EA	2
3	26	PAFZZ	5340-00-826-6993	99378	100-239-0	CLIP, SPRING TENSION USED ON 114E2186-19, -23, -26, -30, -33.....	EA	6

SECTION II

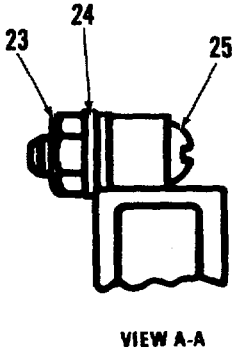
TM 11-6610-202-34P

(1) ILLUSTRATION		(2)	(3)	(4)	(5)	(6)	(7)	(8)
(a) FIG NO.	(b) ITEM NO.	SMR CODE	NATIONAL STOCK NUMBER	FSCM	PART NUMBER	DESCRIPTION USABLE ON CODE	U/M	QTY INC IN UNIT
3	27	PAFZZ	5950-00-715-4638	80223	DOTSH	SHIELD, COIL USED ON 114E2186-19, -23, -26, -30, -33(U/W T302,..... T304, T305)	EA	3
3	28	XAFZZ		77272	114V4007-2	BOARD DETAIL USED ON 114E2186-19, -23, -26, -30, -33.....	EA	1



LEGEND FOR
114V4000-1, -2

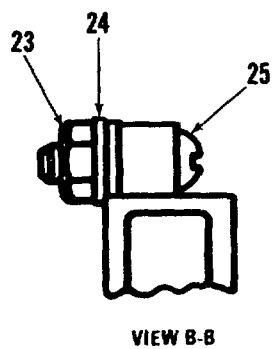
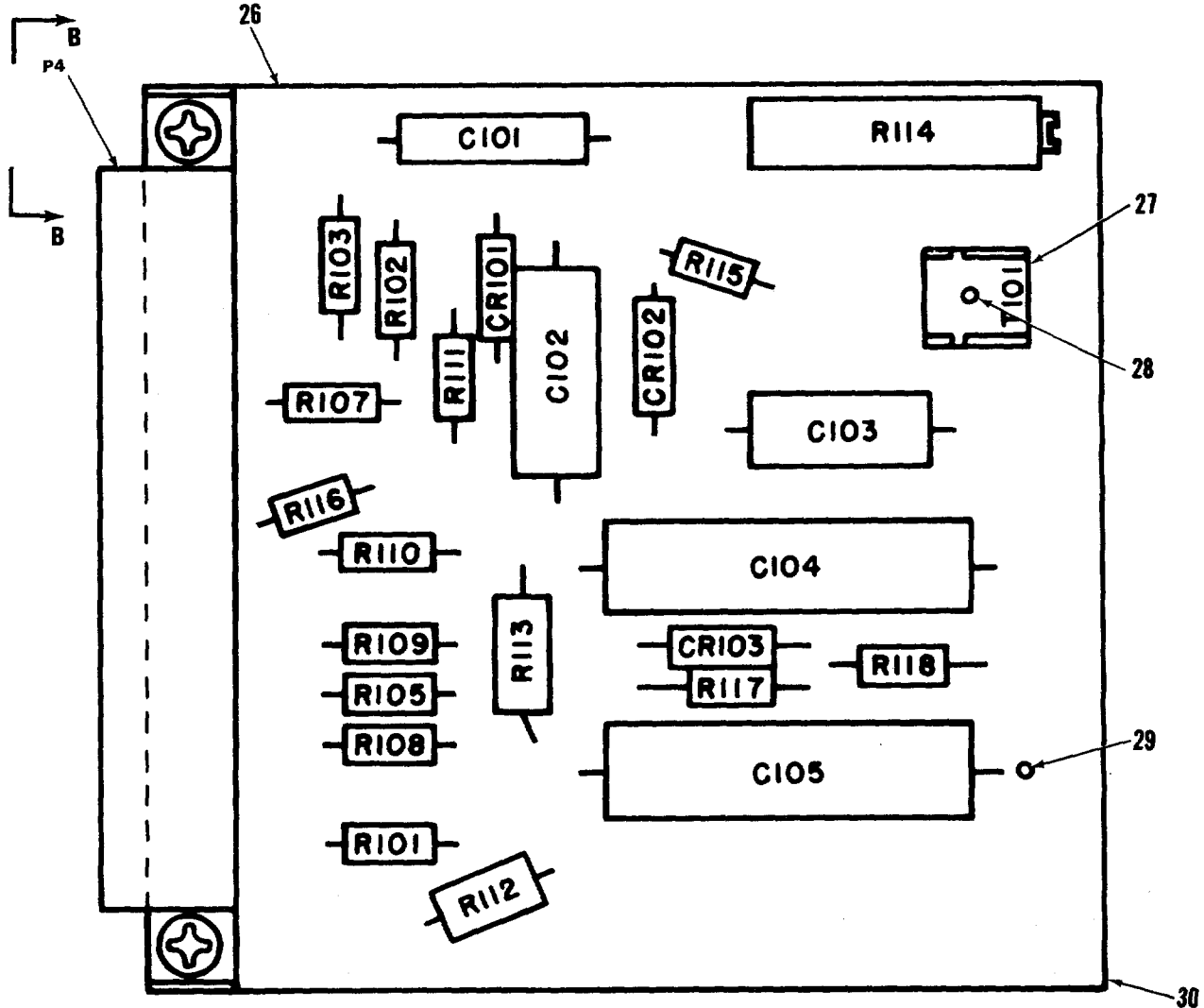
REF DES	ITEM NO.	REF DES	ITEM NO.
CR101	1	R114	17
CR102	1	R115	18
CR103	1	R116	19
C101	3	R117	20
C102	4	R118	21
C103	5	T101	22
C104	6		
C105	6		
P4	7		
R101	8		
R102	9		
R103	9		
R105	10		
R107	11		
R108	12		
R109	13		
R110	13		
R111	14		
R112	15		
R113	16		



VIEW A-A

EL828007

Figure 4. Calibration Component Assembly 114V4000-1, -2, -3, -4 (Sheet 1 of 3)

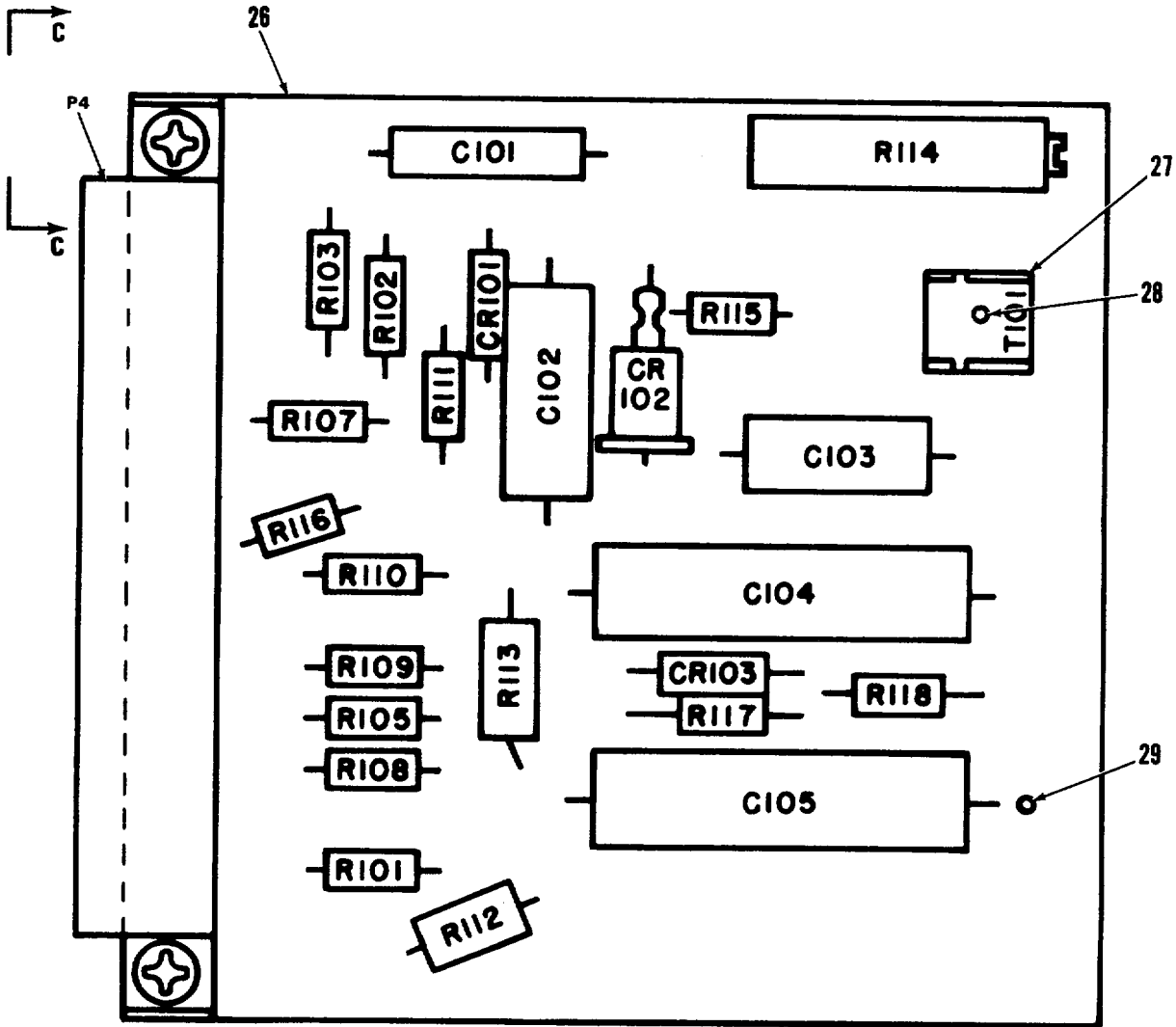


LEGEND FOR
114V4000-3

REF DES	ITEM NO.	REF DES	ITEM NO.
CR101	1	R114	17
CR102	1	R115	18
CR103	1	R116	19
C101	3	R117	20
C102	4	R118	21
C103	5	T101	22
C104	6		
C105	6		
P4	7		
R101	8		
R102	9		
R103	9		
R105	12		
R107	11		
R108	12		
R109	13		
R110	13		
R111	14		
R112	15		
R113	16		

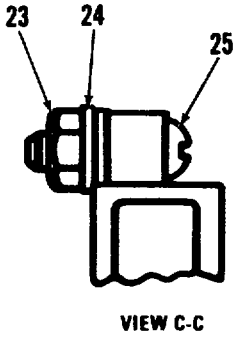
EL828008

Figure 4. Calibration Component Assembly 114V4000-1, -2, -3, -4 (Sheet 2 of 3)



LEGEND FOR
114V4000-4

REF DES	ITEM NO.	REF DES	ITEM NO.
CR101	1	R114	17
CR102	2	R115	18
CR103	1	R116	19
C101	3	R117	20
C102	4	R118	21
C103	5	T101	22
C104	6		
C105	6		
P4	7		
R101	8		
R102	9		
R103	9		
R105	12		
R107	11		
R108	12		
R109	13		
R110	13		
R111	14		
R112	15		
R113	16		



EL82B009

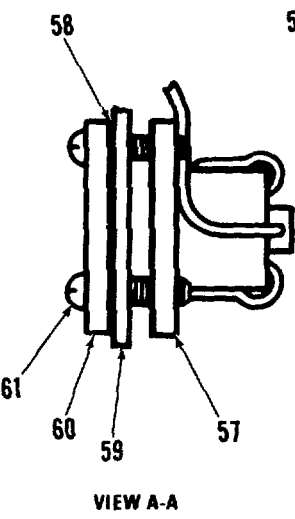
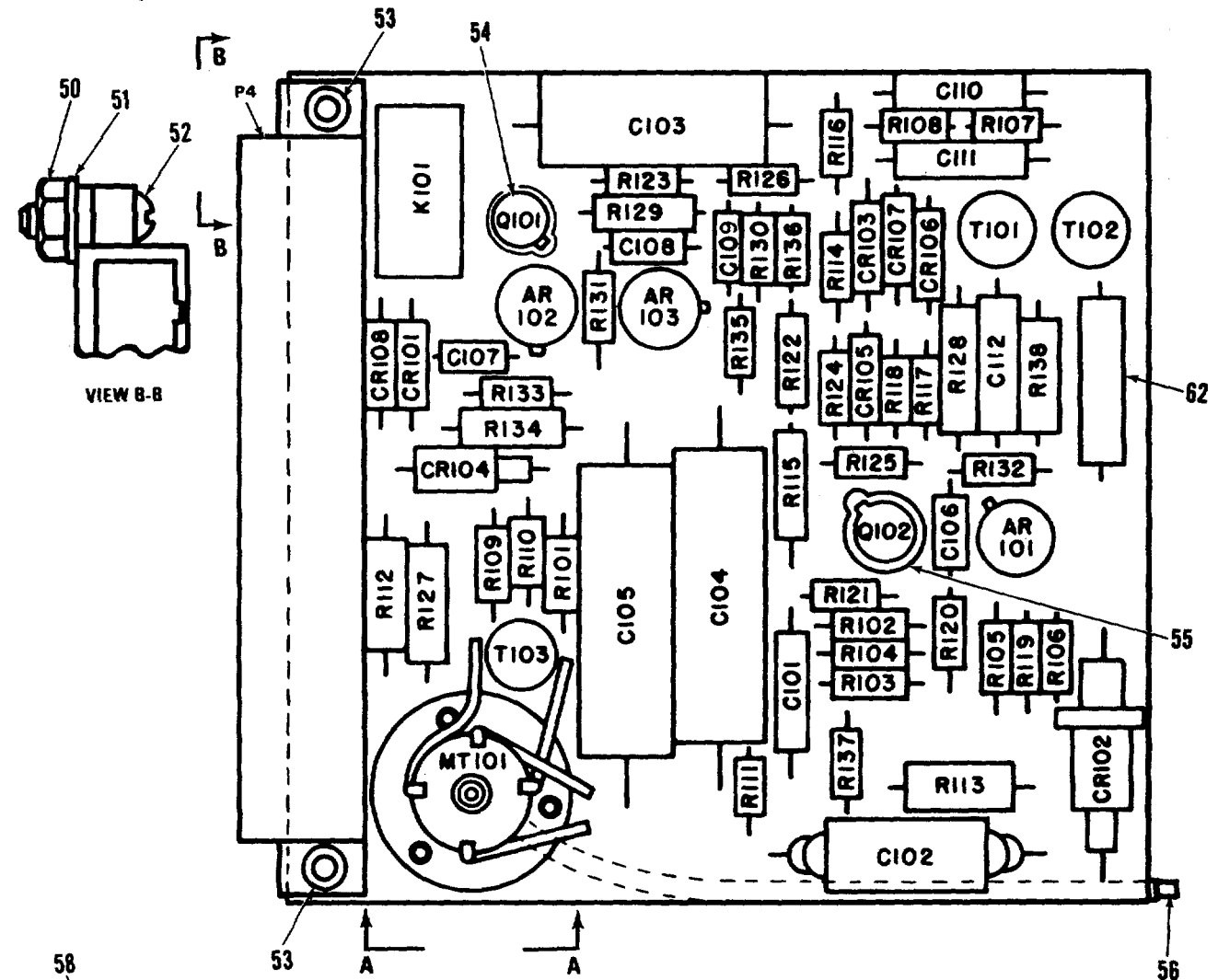
Figure 4. Calibration Component Assembly 114V4000-1, -2, -3, -4 (Sheet 3 of 3).

(1) ILLUSTRATION		(2)	(3)	(4)	(5)	(6)	(7)	(8)
(a) FIG NO.	(b) ITEM NO.	SMR CODE	NATIONAL STOCK NUMBER	FSCM	PART NUMBER	DESCRIPTION USABLE ON CODE	U/M	QTY INC IN UNIT
						GROUP 03 CALIBRATION COMPONENT ASSEMBLY 114V4000-1, -2, -3, -4		
4	1	PAFZZ	5961-00-087-6047	81349	1N4608	SEMICONDUCTOR DEVIC USED ON 114E2186-16., -19, -23, -26(U/W.... 114V4000-1, -2, -3).....	EA	3
4	1	PAFZZ	5961-00-106-6991	01295	1N4004	SEMICONDUCTOR DEVIC ... USED ON 114E2186-16, -19, -23, -26(U/W 114V4000-4	EA	2
4	2	PAFZZ	5961-00-688-6316	81349	JAN1N547M	DIODE USED ON 114E2186-16, -19, -23, -26.....	EA	1
4	3	PAFZZ	5910-00-836-0715	81349	CP05A1KF222- K3	CAPACITOR, FIXED.PAP USED ON 114E2186-16, -19, -23, -26.....	EA	1
4	4	PAFZZ	5910-00-823-1538	81349	CP05A1KC223- K3	CAPACITOR, FIXED, PAP USED ON 114E2186-16, -19, -23, -26.....	EA	1
4	5	PAFZZ	5910-00-815-0386	56289	150D106X0035- R2	CAPACITOR, FIXED, ELE USED ON 114E2186-16, -19, -23, -26	EA	1
4	6	PAFZZ	5910-00-892-7613	56289	112D606C7050- J1	CAPACITOR, FIXED, ELE USED ON 114E2186-16, -19, -23, -26(ALT FOR 112D606C5050J1).....	EA	2
4	6	PAFZZ		56289	112D606C5050- J1	CAPACITOR, SOLID USED ON 114E2186-16, -19, -23, -26.....	EA	2
4	7	PAFZZ	5935-00-724-5762	81205	BACC45L12	CONNECTOR, PLUG, ELEC USED ON 114E2186-16, -19, -23, -26.....	EA	1
4	8	PAFZZ	5905-00-279-3511	81349	RC20GF511J	RESISTOR, FIXED, COMP USED ON 114E2186-16, -19, -23, -26.....	EA	1
4	9	PAFZZ	5905-00-110-0196	81349	RCR20G102JS	RESISTOR, FIXED, COMP USED ON 114E2186-19, -23, -26, -30, -33.....	EA	2
4	10	PAFZZ	5905-00-279-3504	81349	RC20GF472J	RESISTOR, FIXED, COMP USED ON 114E2186-16, -19, -23, -26(U/W.... 114V4000-1, -2).....	EA	1
4	11	PAFZZ	5905-00-141-0596	96906	MS35043-23	RESISTOR, FIXED, COMP USED ON 114E2186-16, -19, -23, -26.....	EA	1
4	12	PAFZZ	5905-00-185-8510	81349	RC20GF103J	RESISTOR, FIXED, COMP USED ON 114E2186-16, -19, -23, -26(U/W.... 114V4000-3, -4).....	EA	2
4	13	PAFZZ	5905-00-279-3499	81349	RC20GF273J	RESISTOR, FIXED, COMP USED ON 114E2186-16, -19, -23, -26(U/W.... 114V4000-1)	EA	2
4	13	PAFZZ		81205	BACR14CJ223	RESISTOR, FIXED, COMP USED ON 114E2186-16, -19, -23, -26(U/W.... 114V40004-2, -3, -4).....	EA	2
4	14	PAFZZ	5905-00-279-3519	81349	RC20GF220J	RESISTOR, FIXED, COMP USED ON 114E2186-16, -19, -23, -26.....	EA	1
4	15	PAFZZ	5905-00-247-8722	81349	RRC32G271JS	RESISTOR, FIXED, COMP USED ON 114E2186-16, -19, -23, -26.....	EA	1
4	16	PAFZZ	5905-00-113-7346	81349	RRC32G470JS	RESISTOR, FIXED, COMP USED ON 114E2186-16, -19, -23, -26.....	EA	1
4	17	PAFZZ		08294	260P-1-103	RESISTOR VARI USED ON 114E2186-16, -19, 23, -26.....	EA	1
4	17	PAFZZ	5905-00-761-5398	81349	RT11C2P103	RESISTOR, VARIABLE USED ON 114E286-16, -19, -23, -26(ALT FOR.... 260P-1-103).....	EA	1
4	18	PAFZZ	5905-00-111-8357	81349	RRC20G681JS	RESISTOR, FIXED, COMP USED ON 114E2186-16, -19, -23, -26.....	EA	1
4	19	PAFZZ	5905-00-279-2673	81349	RC20GF622J	RESISTOR, FIXED, COMP USED ON 114E2186-16, -19, -23, -26.....	EA	1
4	20	PAFZZ	5905-00-249-4256	81349	RC20GF363J	RESISTOR, FIXED, COMP USED ON 114E2186-16, -19, -23, -26.....	EA	1
4	21	PAFZZ	5905-00-279-2667	81349	RC20GF113J	RESISTOR, FIXED, COMP USED ON 114E218-16, -19, -23, -26.....	EA	1
4	22	PAFZZ	5950-00-950-7706	80223	DOT3	TRANSFORMER, AUDIO F USED ON 114E2186-16, -19, -23, -26	EA	1
4	23	PAFZZ		96906	MS20364-63	NUT, SELF LOCKING USED ON 114E2186-16, -19, -23, -26.....	EA	2
4	24	PAFZZ	5310-00-167-0832	88044	AN960-6L	WASHER, FLAT USED ON 114E2186-16, -19, -23, -26	EA	2
4	25	PAFZZ	5305-00-842-0251	80205	NAS601-8P	SCREW, MACHINE USED ON 114E2186-16, -19, -23, -26.....	EA	2
4	26	XBFFF		77272	114V4003-1	BOARD SUB ASSY USED ON 114E2186-16, -19, -23, -26.....	EA	1
4	27	PAFZZ	5340-00-826-6993	99378	100-239-0	CLIP, SPRING TENSION USED ON 114E2186-16, -19, -23, -26, -30, -33..	EA	8
4	28	XBFFF		71279	X2099B	RIVET USED ON 114E2186-16, -19, -23, -26.....	EA	1
4	29	XBFFF		88245	7602B7	EYELET USED ON 114E2186-16, -19, -23, -26.....	EA	13

SECTION II

TM 11-6610-202-34P

(1) ILLUSTRATION		(2)	(3)	(4)	(5)	(6)	(7)	(8)
(a) FIG NO.	(b) ITEM NO.	SMR CODE	NATIONAL STOCK NUMBER	FSCM	PART NUMBER	DESCRIPTION USABLE ON CODE	U/M	QTY INC IN UNIT
4	30	XAFZZ		77272	114V4004-1	BRD PRINTED CIRCUIT USED ON 114E2186-16, -19, -23, -26.....	EA	1



VIEW B-B

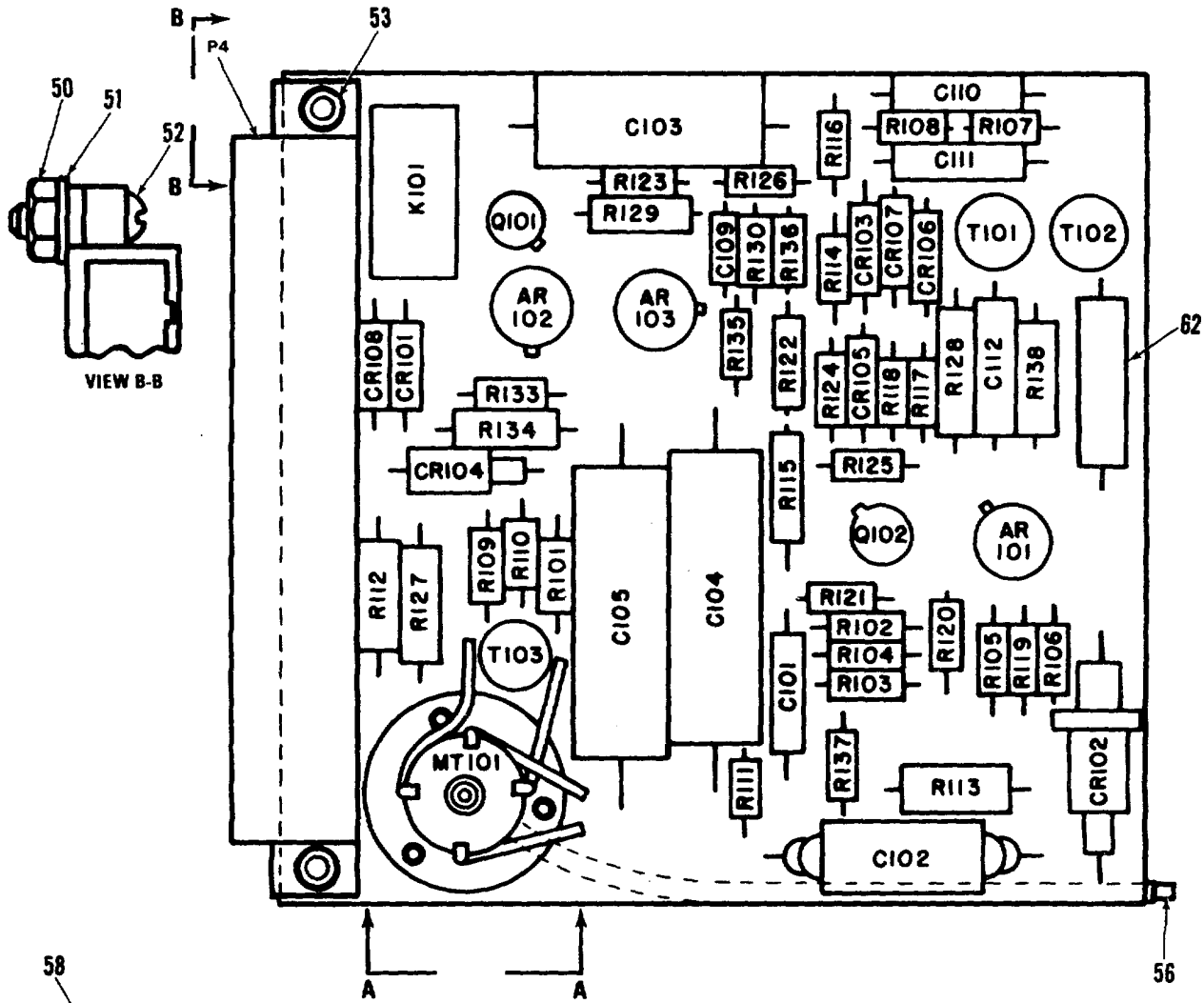
VIEW A-A

LEGEND FOR
114V4013-1

REF DES	ITEM NO.	REF DES	ITEM NO.	REF DES	ITEM NO.	REF DES	ITEM NO.
AR101	1	C110	11	R113	24	R133	42
AR102	1	C111	11	R114	20	R134	43
AR103	1	C112	12	R115	25	R135	44
CR101	2	K101	13	R116	26	R136	45
CR102	3	MT101	14	R117	27	R137	46
CR103	2	P4	15	R118	28	R138	47
CR104	4	Q101	16	R119	29	T101	48
CR105	2	Q102	17	R120	30	T102	48
CR106	2	R101	18	R121	31	T103	49
CR107	2	R102	19	R122	32		
CR108	2	R103	19	R123	33		
C101	5	R104	20	R124	34		
C102	6	R105	20	R125	35		
C103	7	R106	20	R126	36		
C104	8	R107	20	R127	37		
C105	8	R108	20	R128	38		
C106	9	R109	21	R129	39		
C107	9	R110	21	R130	40		
C108	9	R111	22	R131	41		
C109	10	R112	23	R132	41		

EL82B010

Figure 5. Calibration Component Assembly 114V4013-1, -3 (Sheet 1 of 2).



LEGEND FOR
114V4013-3

REF DES	ITEM NO.	REF DES	ITEM NO.	REF DES	ITEM NO.	REF DES	ITEM NO.
AR101	1	K101	13	R116	26	R138	47
AR102	1	MT101	14	R117	27	T101	48
AR103	1	P4	15	R118	28	T102	48
CR101	2	Q101	16	R119	29	T103	49
CR102	3	Q102	17	R120	30		
CR103	2	R101	18	R121	31		
CR104	4	R102	18	R122	32		
CR106	2	R103	19	R123	33		
CR106	2	R104	20	R124	34		
CR107	2	R105	20	R125	35		
CR108	2	R106	20	R126	36		
C101	5	R107	20	R127	37		
C102	6	R108	20	R128	38		
C103	7	R109	21	R129	39		
C104	8	R110	21	R130	40		
C105	8	R111	22	R133	42		
C109	10	R112	23	R134	43		
C110	11	R113	24	R135	44		
C111	11	R114	20	R136	45		
C112	12	R115	25	R137	46		

EL828011

Figure 5. Calibration Component Assembly 114V4013-1, -3 (Sheet 2 of 2)

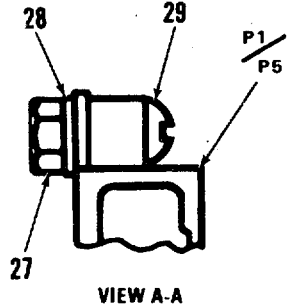
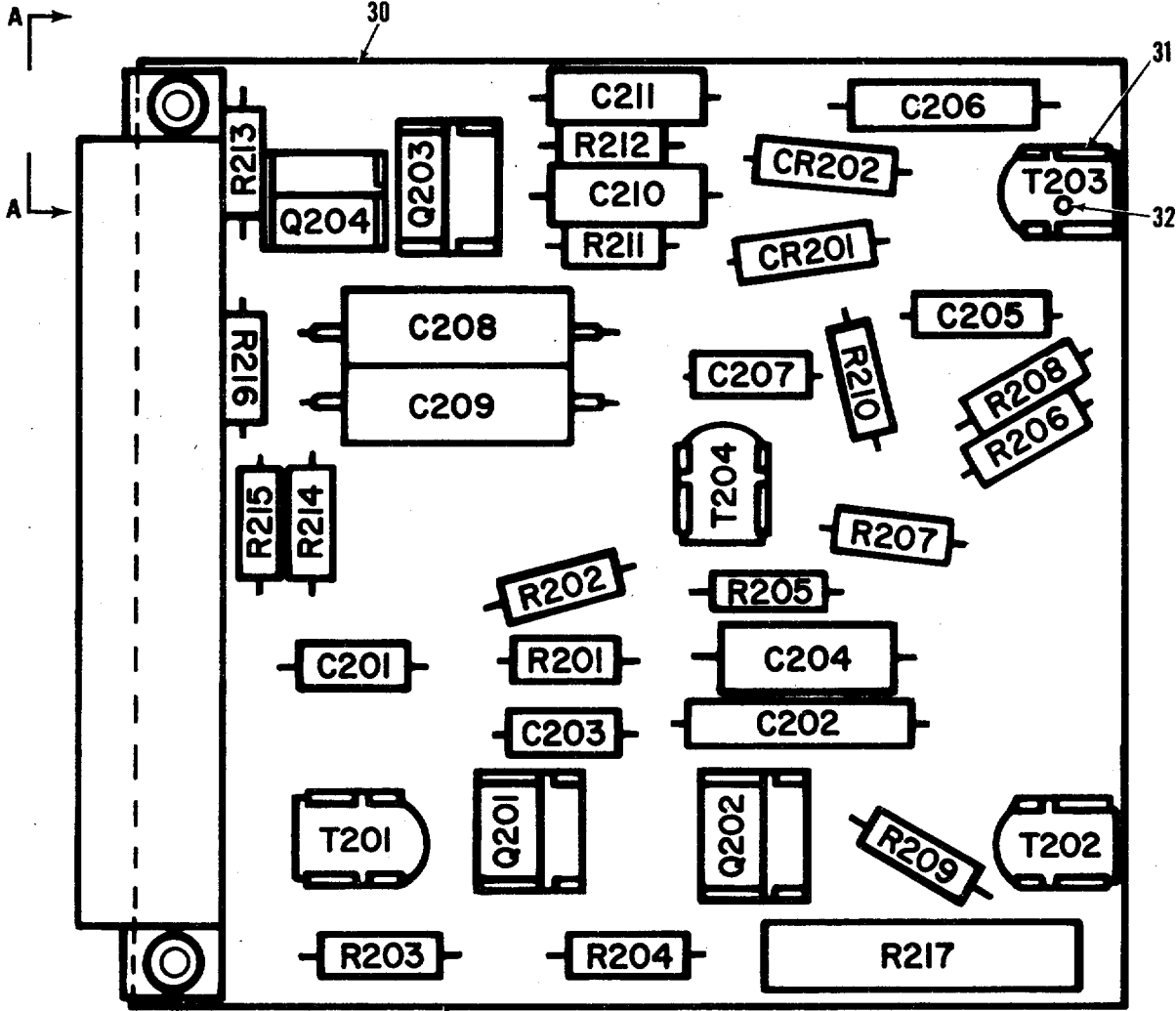
(1) ILLUSTRATION		(2)	(3)	(4)	(5)	(6)	(7)	(8)
(a) FIG NO.	(b) ITEM NO.	SMR CODE	NATIONAL STOCK NUMBER	FSCM	PART NUMBER	DESCRIPTION USABLE ON CODE	U/M	QTY INC IN UNIT
						GROUP 04 CALIBRATION COMPONENT ASSEMBLY 114V4013-1, -3		
5	1	PAFZZ	6625-00-179-1684	15818	809BE	AMPLIFIER TEST USED ON 114E2186-30(ALT FOR 741HM).....	EA	3
5	1	PAFZZ		07263	UA741AHN	INTEG OPER AHP USED ON 114E3030-30, -33.....	EA	3
5	2	PAFZZ	5961-00-087-6047	81349	1N4608	SEMICONDUCTOR DEVIC USED ON 114E2186-30, -33(1N4004 IS AN ALT FOR 1N4608)	EA	6
5	3	PAFZZ	5961-00-688-6316	81349	JAN1N547M	DIODE USED ON 114E2186-30, -33.....	EA	2
5	4	PAFZZ	5961-00-579-4965	81349	1N30208	SEMICONDUCTOR DEVIC USED ON 114E2186-30, -33.....	EA	1
5	5	PAFZZ	5910-00-115-1987	97424	2106K70P101	CAPACITOR, FIXED, ELE USED ON 114E2186-30, -33.....	EA	1
5	7	PAFZZ	5910-00-950-5348	99515	H1-205E	CAPACIIR, FIXED, PAP USED ON 114E2186-30, -33.....	EA	1
5	8	PAFZZ		56289	112D606C5050-J1	CAPACITOR, SOLID USED ON 114E2186-30, -33(1126D06C5050J0 IS AN ALT FDR 112D606C505J1).....	EA	2
5	9	PAFZZ	5910-00-978-7690	81349	CK058X471K	CAPACITOR, FIXED, CER USED ON 114E2186-30.....	EA	3
5	10	PAFZZ	5910-00-847-7288	81349	CK068X103K	CAPACITOR, FIXED, CER USED ON 114E2186-30, -33.....	EA	1
5	11	PAFZZ	5910-00-936-1522	81349	CS138E106K	CAPACITOR, FIXED, ELE USED ON 114E2186-30, -33.....	EA	2
5	12	PAFZZ	5910-00-786-9202	81349	CS138F475K	CAPACITOR, FIXED, ELE USED ON 114E2186-30, -33.....	EA	1
5	13	PAFZZ		35344	EA1AD001	ELECTROMAGNETIC USED ON 114E2186-30, -33.....	EA	1
5	13	PAFZZ	6625-00-908-9106	99928	SRA2C24B	RELAY USED ON 114E2186-30, -33(ALT FOR EA1AD001).....	EA	1
5	13	PAFZZ	5945-00-827-5127	01526	3SAV5004K1	RELAY, ELECTRCMAGNET USED ON 114E218630, -33(ALT FOR EA1AD001)	EA	1
5	13	PAFZZ		24211	GB72AR2150	ELECTROMAGNETIC USED ON 114E2186-30, -33(ALT FOR EA1AD001	EA	1
5	14	PAFZZ	6615-00-133-7869	09384	4-312-0002	TRANSDUCER, FIXED USED ON 114E2186-3, -33.....	EA	1
5	15	PAFZZ		81205	BACC45HL17	CONNECTOR, PLUG, ELEC USED ON 114E2186-30, -33.....	EA	1
5	16	PAFZZ	5961-00-883-6389	14936	3N128	TRANSISTOR USED ON 114E2186-30, -33.....	EA	1
5	17	PAFZZ		56289	2N2946	TRANSISTOR USED ON 114E2186-30, -33.....	EA	1
5	18	PAFZZ	5905-00-197-0224	81349	RCR05G511JS	RESISTOR, FIXED, COMP USED ON 114E218630, -33.....	EA	1
5	19	PAFZZ	5905-00-689-1290	81349	RCR05G512JS	RESISTOR, FIXED, COMP USED ON 114E2186-30, -33.....	EA	2
5	20	PAFZZ	5905-00-413-1200	81349	RCR05G203JS	RESISTOR, FIXED, COMP USED ON 114E2186-30, -33.....	EA	6
5	21	PAFZZ	5905-00-403-8837	81349	RC05GF223J	RESISTOR, FIXED, COMP USED ON 114E2186-30, -33.....	EA	2
5	22	PAFZZ	5905-00-925-8762	81349	RC05GF220J	RESISTOR, FIXED, COMP USED ON 114E2186-30, -33.....	EA	1
5	23	PAFZZ	5905-00-279-2649	81349	RC32GF181J	RESISTOR, FIXED, COMP USED ON 114E28630, -33.....	EA	1
5	24	PAFZZ	5905-00-113-7346	81349	RRC32G470JS	RESISTOR, FIXED, COMP USED ON 114E2186-30, -33.....	EA	1
5	25	PAFZZ	5905-00-843-6615	81349	RN60C1503F	RESISTOR, FIXED, FILM USED ON 114E2186-30, -33.....	EA	1
5	26	PAFZZ	5905-00-470-9163	81349	RC05GF622J	RESISTOR, FIXED, COMP USED ON 114E2186-30, -33.....	EA	1
5	27	PAFZZ	5905-00-948-7266	81349	RC05GF563J	RESISTOR, FIXED, COMP USED ON 114E2186-30, -33.....	EA	1
5	28	PAFZZ	5905-00-946-6352	81349	RC05GF752J	RESISTOR, FIXED, COMP USED ON 114E2186-30, -33.....	EA	1
5	29	PAFZZ	5905-00-917-5523	81349	RC05GF182J	RESISTOR, FIXED, COMP USED ON 114E2186-30, -33.....	EA	1
5	30	PAFZZ	5905-00-921-0326	81349	RN55C1431F	RESISTOR, FIXED, FILM USED ON 114E2186-30, -33.....	EA	1
5	31	PAFZZ	5905-00-492-7607	81349	RRC05G103KS	RESISTOR, FIXED, COMP USED ON 114E2186-30, -33.....	EA	1
5	32	PAFZZ	5905-00-833-5819	81349	RN60C2003F	RESISDOR, FIXED, FILM USED ON 114E2186-30, -33.....	EA	1
5	33	PAFZZ	5905-00-922-7218	81349	RC05GF392J	RESISTOR, FIXED, COMP USED ON 114E2186-16, -19, -23, -26, -30, -33	EA	1

(1) ILLUSTRATION		(2)	(3)	(4)	(5)	(6)	(7)	(8)
(a) FIG NO.	(b) ITEM NO.	SMR CODE	NATIONAL STOCK NUMBER	FSCM	PART NUMBER	DESCRIPTION USABLE ON CODE	U/M	QTY INC IN UNIT
5	34		PAFZZ 5905-00-782-4108		81349 RC05GF472J	RESISTOR, FIXED, COMP USED ON 114E2186-30, -33	EA	1
5	35	PAFZZ	5905-00-412-3776	81349	RCR05G183JS	RESISTOR, FIXED, COMP USED ON 114E2186-30, -33.....	EA	1
5	36	PAFZZ	5905-00-171-2003	81349	RC20GF204J	RESISTOR, FIXED, COMP USED ON 114E2186-30, -33.....	EA	1
5	37	PAFZZ	5905-00-121-9861	81349	RCR32G102JS	RESISTOR, FIXED, COMP USED ON 114E2186-30, -33.....	EA	1
5	38	PAFZZ		81349	RN603573F	RESISTOR, FIXED, FILM USED ON 114E2186-30, -33.....	EA	1
5	39	PAFZZ	5905-00-982-8296	81349	RN5C2742F	RESISTOR, FIXED, FILM USED ON 114E2186-30, -33.....	EA	1
5	40	PAFZZ	5905-00-947-7823	81349	RC05GF754J	RESISTOR, FIXED, COMP USED ON 114E2186-30, -33.....	EA	1
5	41	PAFZZ	5905-00-924-3317	81349	RC05GF152J	RESISTOR, FIXED, COMP USED ON 114E2186-30(U/W 114V4013-1)....	EA	2
5	42	PAFZZ	5905-00-912-6472	81349	RN55C2432F	RESISTOR, FIXED, FILM USED ON 114E2186-30, -33(R137 IS A SELECT AT TEST).....	EA	2
5	43	PAFZZ	5905-00-834-6445	81349	RN60C2553F	RESISTOR, FIXED, FILM USED ON 114E2186-30, -33.....	EA	1
5	44	PAFZZ	5905-00-940-2668	81349	RC05GF272J	RESISTOR, FIXED, COMP USED ON 114E218630, -33.....	EA	1
5	45	PAFZZ	5905-00-949-7220	81349	RC05GF624J	RESISTOR, FIXED, COMP USED ON 114E2186-30, -33(SELECT AT TEST)	EA	1
5	45	PAFZZ	5905-00-491-1985	81349	RCR05G155JS	RESISTOR, FIXED, COMP USED ON 114E3186-30, -33(SELECT AT TEST)	EA	1
5	46	PAFZZ	5905-00-982-0215	81349	RN55C1622F	RESISTOR, FIXED, FILM USED ON 114E2186-30, -33(SELECT AT TEST)	EA	1
5	46	PAFZZ	5905-00-982-0926	81349	RN55C1822F	RESISTOR, FIXED, FILM USED ON 114E2186-30, -33(SELECT AT TEST)	EA	1
5	46	PAFZZ	5905-00-974-5594	81349	RN55C2052F	RESISTOR, FIXED, FILM USED ON 114E2186-30, -33(SELECT AT TEST)	EA	1
5	46	PAFZZ	5905-00-138-7396	81349	RNC55H2262FS	RESISTOR, FIXED, FILM USED ON 114E2186-30, -33(SELECT AT TEST).	EA	1
5	46	PAFZZ	5905-00-917-0352	81349	RN55C2672F	RESISTOR, FIXED, FILM USED ON 114E2186-30, -33(SELECT AT TEST).	EA	1
5	47	PAFZZ	5905-00-726-7506	81349	RN60C4023F	RESISTOR, FIXED, FILM USED ON 114E2186-30, -33(SELECT AT TEST).	EA	1
5	47	PAFZZ	5905-00-432-0463	81349	RNC60H3653FS	RESISTOR, FIXED, FILM USED ON 114E2186-30, -33.....	EA	1
5	47	PAFZZ	5905-00-839-9799	81349	RN60C3323F	RESISTOR, FIXED, FILM USED ON 114E2186-30, -33(SELECT AT TEST).	EA	1
5	47	PAFZZ	5905-00-752-3921	81349	RN60C3013F	RESISTOR, FIXED, FILM USED ON 114E2186-30, -33(SELECT AT TEST).	EA	1
5	47	PAFZZ	5905-00-842-6861	81349	RN60C2613F	RESISTOR, FIXED, FILM USED ON 114E2186-30, -33(SELECT AT TEST).	EA	1
5	47	PAFZZ	5905-00-833-3873	81349	RN60C2263F	RESISTOR, FIXED, FILM USED ON 114E2186-30, -33(SELECT AT TEST).	EA	1
5	47	PAFZZ	5905-00-722-4889	81349	RN60C1873F	RESISTOR, FIXED, FILM USED ON 114E2186-30, -33.....	EA	1
5	47	PAFZZ	5905-00-812-7961	81349	RN60CI543F	RESISTOR, FIXED, FILM USED ON 114E2186-30, -33(SELECT AT TEST).	EA	1
5	47	PAFZZ	5905-00-843-6614	81349	RN60C1153F	RESISTOR, FIXED, FILM USED ON 114E2186-30, -33(SELECT AT TEST).	EA	1
5	47	PAFZZ	5905-00-853-3774	81349	RN60C7872F	RESISTOR, FIXED, FILM USED ON 114E2186-30, -33(SELECT AT TEST).	EA	1
5	47	PAFZZ	5905-00-825-0957	81349	RN60C3832F	RESISTOR, FIXED, FILM USED ON 114E2186-30, -33(SELECT AT TEST).	EA	1
5	48	PAFZZ		80223	D1T276	TRANSFORMER, POWER USED ON 114E2186-30, -33.....	EA	2
5	49	PAFZZ	5950-00-959-3285	80223	D1T270	TRANSFORMER, AUDIO F USED ON 114E2186-30, -33.....	EA	1
5	50	PADZZ	5310-00-905-8451	88044	MS21083N06	NUT, SELF-LOCKING,HE USED ON 114E2186-30, -33(ALT FOR GS4-L1 WHEN U/W AN960-6L ANDNAS601-8P)	EA	2
5	51	PAFZZ	5310-00-167-0832	88044	AN960-6L	WASHER, FLAT USED ON 114E2186-30, -33(ALT FOR GS4-11 WHEN U/W MS20364-632AND NAS601-8P).....	EA	2
5	52	PAFZZ	5305-00-842-0251	80205	NAS601-8P	SCREW, MACHINE USED ON 114E2186-30, -33(ALT FOR GS4-11 WHEN U/W AN960-6L ANDMS20364-632	EA	2
5	53	XBFZZ		57771	GS4-11	EYELET USED ON 114E2186-30, -33.....	EA	1
5	54	PAFZZ	5999-00-909-0522	81205	BACP50A4	MOUNTING PAD, ELECTR USED ON 114E2186-30	EA	1
5	55	PAFZZ	5999-00-823-9560	04660	580002-001	MOUNTING PAD, ELECTR USED ON 114E2186-30	EA	1
5	56	XBFZZ		77272	114V4014-3	TUBE USED ON 114E2186-30, -33	EA	1

SECTION II

TM 11-6610-202-34P

(1) ILLUSTRATION		(2)	(3)	(4)	(5)	(6)	(7)	(8)
(a) FIG NO.	(b) ITEM NO.	SMR CODE	NATIONAL STOCK NUMBER	FSCM	PART NUMBER	DESCRIPTION USABLE ON CODE	U/M	QTY INC IN UNIT
5	57	XBFZZ	5305-00-989-0682	77272	114V4014-1	RING USED ON 114E2186-30.....	EA	1
5	58	XAFZZ		77272	114V4012-1	BOARD P.C. USED ON 114E2186-30, -33.....	EA	1
5	59	PCFZZ		77272	114V4013-2	GASKET USED ON 114E2186-30, -33.....	EA	1
5	60	XBFZZ		77272	114V4014-4	MOUNT USED ON 114E2186-30, -33.....	EA	1
5	61	PAFZZ		96906	MS35206-205	SCREW, MACHINE USED ON 114E2186-30, -33.....	EA	3
5	62	PAFZZ		81205	BAC27TEX-2	DECAL, VINYL USED ON 114E2186-30, -33.....	EA	1

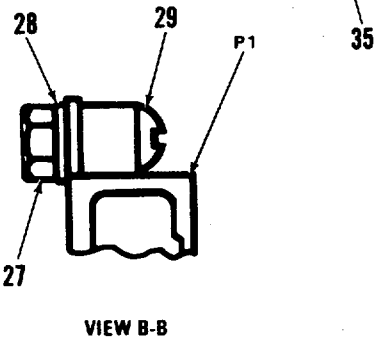
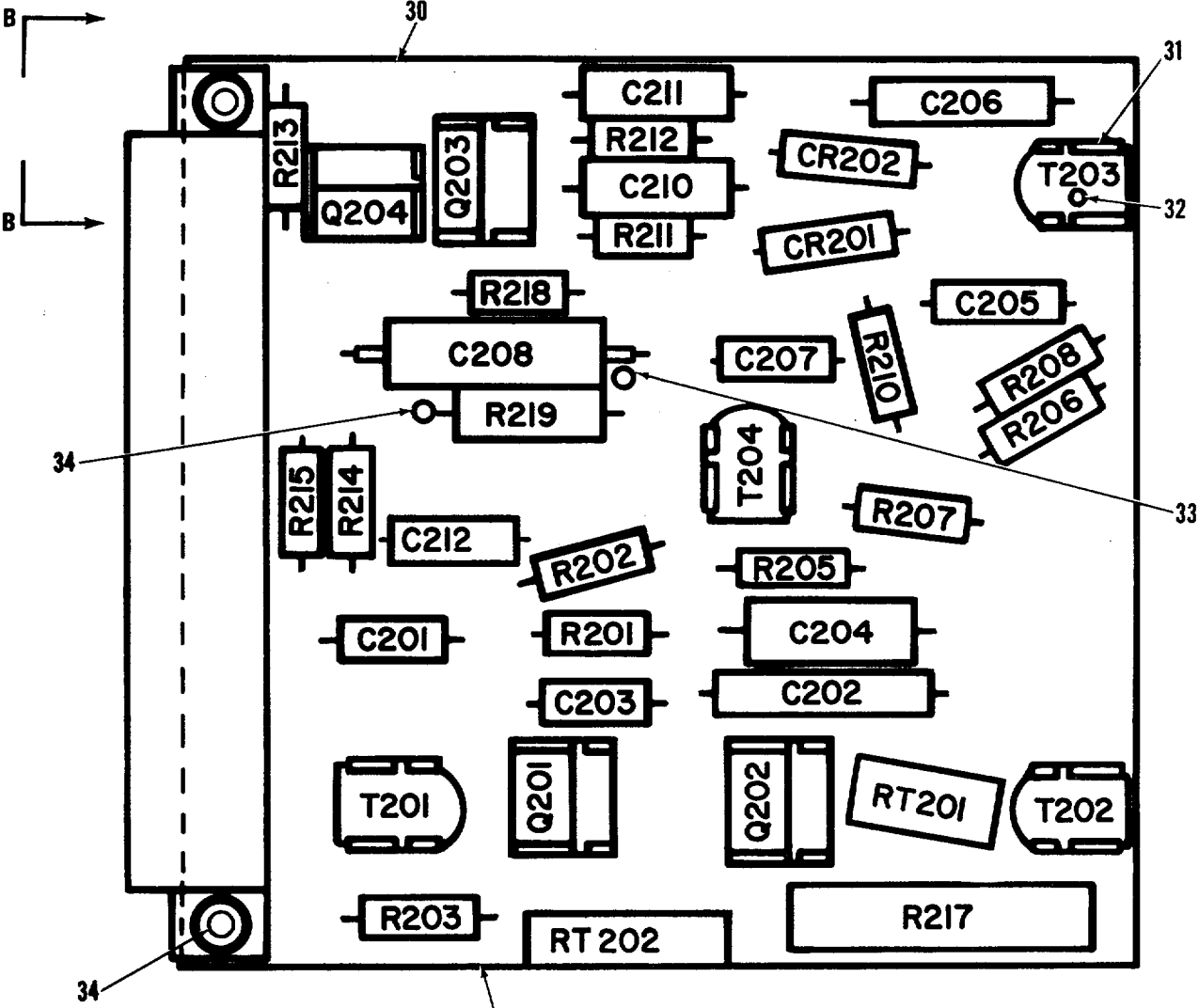


LEGEND FOR 107H5001-3

REF DES	ITEM NO.	REF DES	ITEM NO.
CR201	1	R202	13
CR202	1	R203	14
C201	2	R204	15
C202	3	R205	16
C203	4	R206	13
C204	5	R207	17
C205	2	R208	13
C206	6	R209	15
C207	4	R210	18
C208	7	R211	19
C209	8	R212	19
C210	5	R213	18
C211	5	R214	18
P1	10	R215	18
P5	10	R216	20
Q201	11	R217	21
Q202	11	T201	25
Q203	12	T202	25
Q204	12	T203	26
R201	13	T204	26

Figure 6. Preamplifier Component Assembly 107H5001, -3, -6, -8 (Sheet 1 of 2).

EL828012



LEGEND FOR
107H5001-6 AND -8

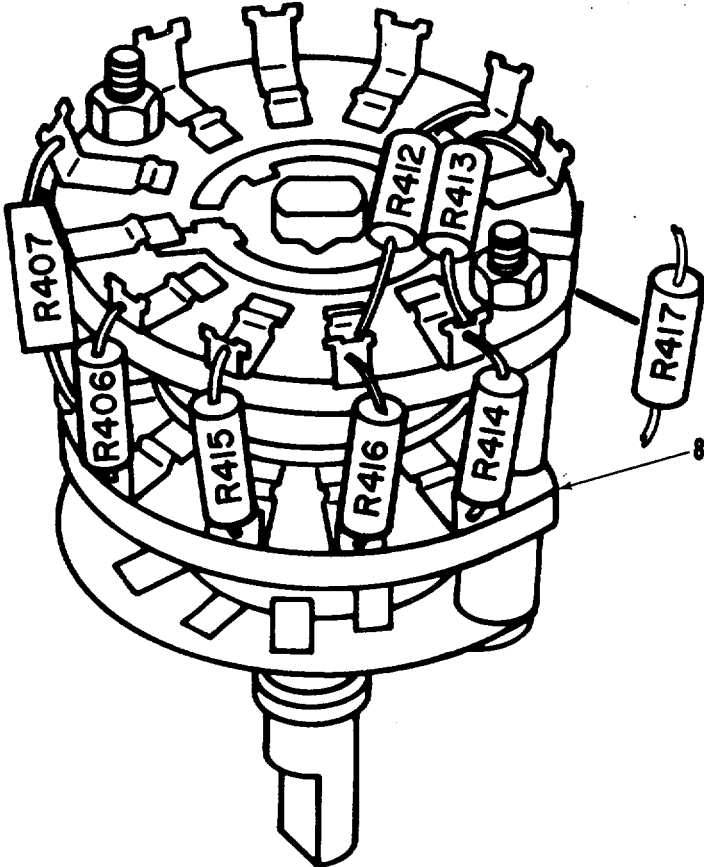
REF DES	ITEM NO.	REF DES	ITEM NO.	REF DES	ITEM NO.
CR201	1	RT202	24	T204	26
CR202	1	R201	13		
C201	2	R202	13		
C202	3	R203	14		
C203	4	R205	16		
C204	5	R206	13		
C205	2	R207	17		
C206	6	R208	13		
C207	4	R210	18		
C208	7	R211	19		
C209	8	R212	19		
C210	5	R213	18		
C211	5	R214	18		
C212	9	R215	20		
P1	10	R217	21		
Q201	11	R218	22		
Q202	11	R219	23		
Q203	12	T201	25		
Q204	12	T202	25		
RT201	24	T203	26		

EL82B013

Figure 6. Preamplifier Component Assembly 107H5001-3, -6, -8 (Sheet 2 of 2).

(1) ILLUSTRATION		(2)	(3)	(4)	(5)	(6)	(7)	(8)
(a) FIG NO.	(b) ITEM NO.	SMR CODE	NATIONAL STOCK NUMBER	FSCM	PART NUMBER	DESCRIPTION USABLE ON CODE	U/M	QTY INC IN UNIT
						GROUP 05 PREAMPLIFIER COMPONENT ASSEMBLY 107H5001, -3, -6, -8		
6	1	PAFZZ	5961-00-087-6047	81349	1N4608	SEMICONDUCTOR DEVIC USED ON 114E2186-16, -19, -23, -26, -30, -..... 33(1N4004 IS AN ALT FOR 1N4608).....	EA	2
6	2	PAFZZ	5910-00-007-2004	56289	150D475X9035- B2	CAPACITOR, FIXED, ELE USED ON 114E2186-16, -19, -23, -26, -30, -33,	EA	2
6	3	PAFZZ	5910-00-833-7797	81349	CP05A1KF102K3	CAPACITOR, FIXED, PAP USED ON 114E2186-16, -19, -23, -26, -30, -33,	EA	1
6	4	PAFZZ	5910-00-104-0144	56289	150D105X9035- A2	CAPACITOR, FIXED, ELE USED ON 114E2186-16, -19, -23, -26, -30, -33,	EA	2
6	5	PAFZZ	5910-00-815-0386	56289	150D106X0035- R2	CAPACITOR, FIXED, ELE USED ON 114E2186-16, -19, -23, -26, -30, -33,	EA	3
6	6	PAFZZ	5910-00-811-2946	24446	29F585	CAPACITOR, FIXED, ELE USED ON 114E2186-16, -19, -23, -26, -30, -33,	EA	1
6	7	PAFZZ	5910-00-8231538	81349	CP05A1KC223- K3	CAPACITOR, FIXED, PAP USED ON 114E2186-16, -19, -23, -26(U/W..... 107H50001-3).....	EA	1
6	8	PAFZZ	5910-00-821-7071	81349	CP05A1KE333- K3	CAPACITOR, FIXED, PAP USED ON 114E2186-16, -19, -23, -26(U/W..... 107H5001-3).....	EA	1
6	8	PAFZZ	5910-00-825-1637	81349	CP05A1KC104-	CAPACITOR, FIXED, PLA USED ON 114E2186-30, -33(U/W 107H5001-5, -8)	EA	1
6	9	PAFZZ	5910-00-880-4156	81349	CS13BE476K	CAPACITOR, FIXED, ELE USED ON 114E2186-30, -33(U/W 107H5001-6, -8)	EA	1
6	10	PAFZZ		81205	BACC45HL13	CONNECTOR USED ON 114E2186-16, -19, -23, -26, -30, -33(107H5001-2 IS AN ALT FOR BACC45HL13).....	EA	1
6	11	PAFZZ		81349	JAN2N652A	TRANSISTOR USED ON 114E2186-16, -19, -23, -26, -30, -33.....	EA	2
6	12	PAFZZ	5961-00-686-8578	81349	2N338	TRANSISTOR USED ON 114E2186-16, -19, -23, -26, -30, -33.....	EA	2
6	13	PAFZZ	5905-00-185-8510	81349	RC20GF103J	RESISTOR, FIXED, COMP USED ON 114E2186-16, -19, -23, -26, -30, -33,	EA	4
6	14	PAFZZ	5905-01-056-8208	01121	RC20GF274J	RESISTOR, FIXED, COMP USED ON 114E2186-16, -19, -23, -26, -30, -33,	EA	1
6	15	PAFZZ	5905-00-106-9344	81349	RCR20G101JS	RESISTOR, FIXED, COMP USED ON 114E2186-16, -19, 23, -26(U/W..... 107H5001-3).....	EA	2
6	16	PAFZZ	5905-00-279-3506	81349	RC20GF332J	RESISTOR, FXED, COMP USED ON 114B2186-16, -19, -23, -26, -30, -33,	EA	1
6	17	PAFZZ	5905-00-110-0196	81349	RCR20G102JS	RESISTOR, FIXED, COMP USED ON 114E2186-16, -19, -23, -26, -30, -33,	EA	1
6	18	PAFZZ	5905-00-107-5522	01121	RC20GF222J	RESISTOR, FIXED, COMP USED ON 114E2186-16, -19, -23, -26, -30, -33,	EA	4
6	19	PAFZZ	5905-01-056-8196	01121	RC20GF223J	RESISTOR, FIXED, COMP USED ON 114E2186-16, -19, -23, -26, -30, -33,	EA	2
6	20	PAFZZ	5905-00-111-8357	81349	RCR20G681JS	RESISTOR, FIXED, COMP USED ON 114E2186-16, -19, -23, -26, -30, -33,	EA	1
6	21	PAFZZ	5905-00-811-5552	80294	260P1-501	RESISTOR, VARIABLE, W USED ON 114E2186-16, -19, -23, -26, -30, -33,	EA	1
6	21	PAFZZ	5905-00-079-3499	81349	RT11C2P501	RESISTOR, VARIABLE, W . USED ON 114E2186-16, -19, -23, -26, -30, - 33(ALT FOR 260P1-501).	EA	1
6	22	PAFZZ	5905-00-114-2853	01121	RC20GF512J	RESISTOR, FIXED, COMP USED ON 114E2186-30(U/W 107H5001-6)....	EA	1
6	22	PAFZZ	5905-00-172-7945	81349	RCR42G512JS	RESISTOR, FIXED, COMP USED ON 114E2186-30, -33(U/W 107H5001-8).	EA	1
6	23	PAFZZ	5905-00-299-2052	81349	RC32GF561J	RESISTOR, FIXED, COMP USED ON 114E2186-30, -33(U/W 107H5001-6, -8)	EA	1
6	24	PAFZZ		72819	304839	RESISTOR, THERMAL USED ON 114E2186-30, -33(U/W 107H5001-, 6, -8)	EA	2
6	25	PAFZZ	5950-00-799-4163	30003	247AS-C1526	TRANSFORMER, AUDIO F USED ON 114E2186-16, -19, -23, -26, -30, -33,	EA	1
6	26	PAFZZ	5950-00-851-4221	80223	DOT25	TRANSFORMER, AUDIO F USED ON 114E2186-16, -19, -23, -26, -30, -33,	EA	3
6	27	PAFZZ	5310-00-905-8451	96906	MS21083N06	NUT, SELF-LOCKING.HE USED ON 114E2186-16, -19, -23, -26, -30, -..... 33(ALT FOR GS4-11 WHEN U/W NAS620-6L ANDAN515-6RB).....	EA	2
6	28	PAFZZ	5310-00-167-0832	88044	AN960-6L	WASHER, FLAT USED ON 114E2186-16, -19, -23, -26, -30, -33(ALT FOR NAS620-6L DIALT FOR GS4-11 WHEN U/W MS20364-632 ANDAN515-6R8).	EA	2

(1) ILLUSTRATION		(2)	(3)	(4)	(5)	(6)	(7)	(8)
(a) FIG NO.	(b) ITEM NO.	SMR CODE	NATIONAL STOCK NUMBER	FSCM	PART NUMBER	DESCRIPTION USABLE ON CODE	U/M	QTY INC IN UNIT
6	28	PAFZZ	5310-00-616-6822	80205	NAS620-6L	WASHER, FLAT USED ON 114E2186-16, -19, -23, -26, -30, -33(ALT FOR G54-11 WHEN U/W MS20364-632 ANDAN515-6R8)	EA	2
6	29	XBFFZ		57171	GS4-11	EYELET USED ON 114E2186-16, -19, -23, -26, -30, -33.....	EA	2
6	29	PAFZZ	5305-00-842-0251	80205	NAS601-8P	SCREW, MACHINE USED ON 114E2186-16, -19, -23, -26, -30, -33(SUB. FOR GS4 11 WHEN U/W MS20364-632 ANDNAS620- 6L.....	EA	2
6	30	XBFFF		77722	107H5003-1	BOARD SUB ASSY USED ON 114E2186-16, -19, -23, -26(U/W 107H5001-3)	EA	1
6	30	XBFFF		77272	107H5003-4	BOARD SUB ASSY USED ON 114E2186-30, -33(U/W 107H5001-6, -8)...	EA	1
6	31	PAFZZ	340-00-826-6993	99378	100-239-0	CLIP, SPRING TENSION USED ON 114E2186-16, -19, -23, -26, -30, -33.	EA	8
6	32	XBFFZ		71279	X2099B	RIVET USED ON 114E286-16, -19, -23, -26, -30, -33.....	EA	8
6	33	PAFZZ	5940-00-500-5644	71279	160-2043-02-01-0	TERMINAL, STUD USED ON 114E2186-30, -33(U/W 107H5001-6, -8).....	EA	4
6	34	XBFFZ		88245	76028	EYELET USED ON 114E2186-30, -33(U/W 107H5001-6, -8).....	EA	3
6	35	XAFZZ		77272	107H5005-1	BOARD PRINTED CKT USED ON 114E2186-16, -19, -23, -26(U/W..... 107H5001-3)	EA	1
6	35	XAFZZ		77272	107H5005-4	BOARD PRINTED CKT USED ON 114E2186-30, -33(U/W 107H5001-6, -8)	EA	1



NOTE
PREFIX ALL REFERENCE
DESIGNATIONS, WITH S403

LEGEND FOR
114E2186-18, -25,
AND -32

REF DES	ITEM NO.
R406	1
R407	2
R412	3
R413	3
R414	4
R415	5
R416	6
R417	7

Figure 7. Selector Switch 114E2186-18, -25, -32.

EL828014

(1) ILLUSTRATION		(2)	(3)	(4)	(5)	(6)	(7)	(8)
(a) FIG NO.	(b) ITEM NO.	SMR CODE	NATIONAL STOCK NUMBER	FSCM	PART NUMBER	DESCRIPTION USABLE ON CODE	U/M	QTY INC IN UNIT
						GROUP 06 SELECTOR SWITCH 114E2186-18, -25, -32		
7	1	PAFZZ	5905-00-279-2616	01121	RC20GF153J	RESJSTOR.FIXED, COMP USED ON 114E2186-16, -19, -23, -26, -30, -33.	EA	1
7	2	PAFZZ	5905-00-279-3497	01121	RC20GF393J	RESISTOR, FIXED, COMP USED ON 114E2186-16, -19, -23, -26, -30, -33.	EA	1
7	3	PAFZZ	5905-00-051-0986	81349	RN55C1782F	RESISTOR, FIXED, FILM USED ON 114E2186-30, -33(U/W 114E2186-32)	EA	2
7	3	XAFZZ		81349	RNC60K1102FS	RESISTOR, FIXED, FILM USED ON 114E2186-23, -26(U/W 114E2186-25) (RN6091102FIS AN ALT FOR RN60D1102F)	EA	2
7	4	PAFZZ	5905-00-279-1757	01121	RC20GF152J	RESISTOR, FIXED, COMP USED ON 114E2186-16, -19, -23, -26, -30, -33.	EA	1
7	5	PAFZZ		81349	RC20GF752J	RESISTOR, FIXED, COMP USED ON 114E2186-16, -19, -23, -26, -30, -33.	EA	1
7	6	PAFZZ		81349	RC20GF202J	RESISTOR, FIXED, CUMP USED ON 114E2186-16, -19, -23, -26, -30, -33.	EA	1
7	7	PAFZZ	5905-00-190-8883	01121	RC20GF100J	RESISTOR, FIXED, COMP USED ON 114E2186-16, -19, -23, -26, -30, -33.	EA	1
7	8	PAFZZ	5930-00-944-8666	71590	PA024-5743	SWITCH, ROTARY USED ON 114E2186-16, -19, -23, -26, -30, -33.....	EA	1

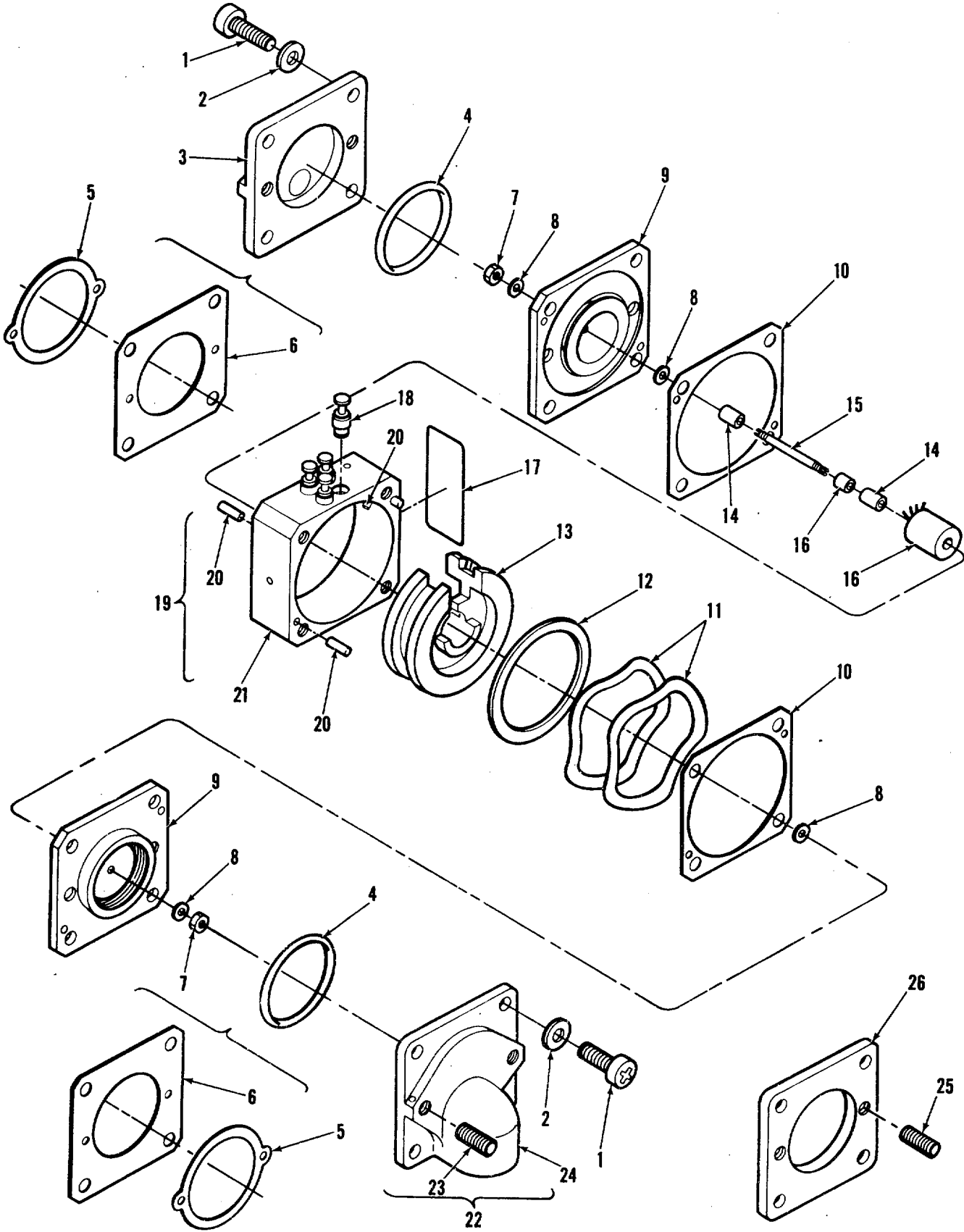


Figure 8. Sensor 114h5400-2, -3, -4.

EL8Z8015

(1) ILLUSTRATION		(2)	(3)	(4)	(5)	(6) DESCRIPTION	(7)	(8)
(a) FIG NO.	(b) ITEM NO.	SMR CODE	NATIONAL STOCK NUMBER	FSCM	PART NUMBER	USABLE ON CODE	U/M	QTY INC IN UNIT
						GROUP 07 SENSOR 114H5400-2, -3, -4		
8	1	PAFZZ	5305-00-963-2048	80205	NAS1191C08P8N	SCREW, SELF-LOCKING USED ON 114E2186-16, -19, -23, -26, -30, -.....	EA	8
8	1	PAFZZ	5305-00-842-0251	80205	NAS601-8P	33(ALT FOR AN 515-8R8).....	EA	8
8	2	PAFZZ	5310-00-834-7420	80205	NAS620-8L	SCREW, MACHINE USED ON 114E2186-16, -19, -23, -26, -30, -33.....	EA	8
8	2	PAFZZ	5310-00-045-3299	96906	MS35338-42	WASHER, FLAT USED ON 114E2186-16, -19, -23, -26, -30, -33(ALT FOR	EA	8
8	3	XAFZZ		77272	114H5412-2	MS35338-42).....	EA	1
8	3	XAFZZ		77272	114H5412-5	WASHER, LOCK USED ON 114E2186-16, -191-23, -26, -30, 33.....	EA	8
8	4	PAFZZ	5330-00-631-1341	96906	MS28775-021	COVER, PRESSURE SENS USED ON 114E2186-16, -19, -23, -26, -30, -	EA	1
8	5	PAFZZ	5330-00-350-4315	77272	114V5012-1	33(U/W 114H500-3, -4)(ALT FOR 114H5412-5).....	EA	1
8	6	PCFZZ		77272	114H5409-1	COVER USED ON 114E2186-16, -19, -23, -26, -30, -33(U/W 114H5400-5)	EA	1
8	7	PAFZZ	5310-00-266-0510	88044	AN345C1	PACKING, PREFORMED USED ON 114E2186-16, -19, -23, -26, -30, -.....	EA	2
8	8	PAFZZ		77272	114H5407-1	33(U/W 114H5412-5 AND 114H5400-5).....	EA	2
8	8	PAFZZ	5310-00-804-0141	96906	MS15795-801	GASKET USED ON 114E2186-16, -19, -23, -26, -30, -33(ALT FOR MS....	EA	2
8	9	PAFZZ	6615-00-953-2310	77272	114HS541-5	28775-021 WHEN U/W 114H5412-5AND 114H5400-5)(PFD WHEN U/W	EA	2
8	9	XAFZZ		77272	114HS541-1	114H5401-1, -2OR 114H5412-1, -2).....	EA	2
8	10	PCFZZ		77272	114H5408-1	GASKET, OUTER USED ON 114E216-16, -19, -23, -26, -30, -33(ALT FOR	EA	2
8	11	PAFZZ	5310-00-969-8949	77272	114H5405-1	114V5012-1 WHEN U/W 114H5401-1.-2OR 114H5412-1, -2).....	EA	2
8	12	PAFZZ	5365-00-781-4723	77272	VS15305C3126-24	WASHER, SPRING TENSILE USED ON 114E2186-16, -19, -23, -26, -30, -33.	EA	2
8	13	XBFHH	5826-00-877-0619	77272	114H5402-1	SPACER, RING USED ON 114E2186-16, -19, -23, -26, -30, -33.....	EA	1
8	14	PAFZZ	5365-00-824-2301	77272	114H5411-1	MOUNT, TRANSDUCER USED ON 114E2186-16, -19, -23, -26, -30, -33..	EA	1
8	15	PAFZZ	6615-00-781-4724	77272	114H5410-1	SPACER, SLEEVE USED ON 114E2186-16, -19, -231-26, -30, -33.....	EA	2
8	15	PAFZZ	6615-00-781-4724	77272	114H5410-1	SHAFT, STRAIGHT USED ON 114E2186-16, -19, -23, -26, -30, -33(ALT..	EA	1
8	15	PAFZZ	6615-00-781-4724	77272	114H5410-2	FOR 114H5410-3)	EA	1
8	15	PAFZZ	6615-00-451-0591	77272	114H5410-3	SHAFT, STRAIGHT USED ON 114E2186-16, -19., -23, -26, -30, -33.....	EA	1
8	16	PAFZZ	6615-00-781-0497	77272	114HS540-10	SHAFT, STRAIGHT USED ON 114E2186-16, -19, -23, -26, -30, -33(ALT..	EA	1
8	17	XBFZZ		77272	114H5406-1	FOR 114H5410-3)	EA	1
8	18	PAFZZ	5940-00-727-4974	06413	305-04	TRANSDUCER, DISPLACE USED ON 114E2186-16, -19, -23, -26, -30, -33.	EA	1
8	19	XBFZZ		77272	114H5403-1	PLATE, IDENT USED ON 114E2186-16, -19, -23, -26, 30, -33.....	EA	1
8	19	XBFZZ		77272	114H5403-4	PIN, STRAIGHT USED ON 11E2186-16, -19, -23, -26, -30, -.....	EA	6
8	20	PAFZZ	5315-00-702-9650	96906	MS16555-602	33(NAS607-1-2P IS AN ALT FOR MS16555-602).....	EA	6
8	21	XAFZZ		77272	114H5403-2	HOUSING USED ON 114E2186-16, -19, -23, -26, -30, -33(U/W.....	EA	1
						14H5403-1).....		

SECTION II

TM 11-6610-202-34P

(1) ILLUSTRATION		(2)	(3)	(4)	(5)	(6)	(7)	(8)
(a) FIG NO.	(b) ITEM NO.	SMR CODE	NATIONAL STOCK NUMBER	FSCM	PART NUMBER	DESCRIPTION USABLE ON CODE	U/M	QTY INC IN UNIT
8	21	XAFZZ		77272	114H5403-3	HOUSING USED ON 114E2186-16, -19, -23, -26, -30, -33(U/W..... 114H5403-4).....	EA	1
8	22	XBFFF		77272	114H5400-5	COVER ASSY USED ON 114E2186-16, -19, -23, -26, -30, -33(U/W..... 114H5412-5).....	EA	1
8	23	PAFZZ	5305-01-006-6848	80205	NAS1081-04A7P	SETSCREW USED ON 114E2186-16, -19, -23, -26, -30, -33(U/W..... 114H5400-5).....	EA	2
8	24	XAFZZ		77272	114H5412-4	COVER END USED ON 114E218-16, -19, -23, -26, -30, -33(U/W..... 114H500-5).....	EA	1
8	25	PAFZZ	5305-00-95-6506	80205	NAS1081-06A7L	SETSCREW USED ON 114E2186-16, -19, -23, -26, -30, -33(ALT FOR.... NAS1081-06A7P).....	EA	2
8	25	PAFZZ	5305-00-421-7853	80205	NAS1081-06A7P	SETSCREW USED ON 114E2186-16, -19, -23, -26, -30, -33(U/W..... 114H5401-1, 114H5412-1).....	EA	2
8	26	XAFZZ		7272	114H5412-1	COVER, PRESSURE SENS USED ON 114E2186-16, -19, -23, -26, -30, -	EA	1

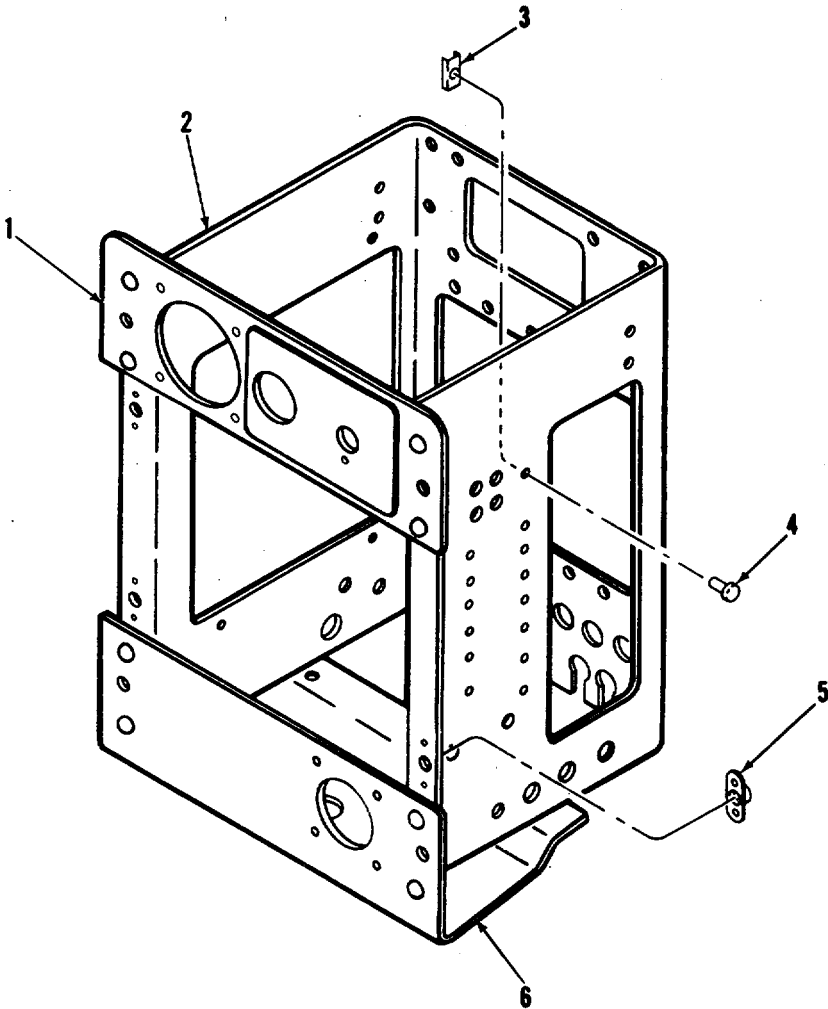


Figure 9. Chassis Assembly Metal 114E2184-11, -13.

EL8ZBO16

(1) ILLUSTRATION		(2)	(3)	(4)	(5)	(6) DESCRIPTION	(7)	(8)
(a) FIG NO.	(b) ITEM NO.	SMR CODE	NATIONAL STOCK NUMBER	FSCM	PART NUMBER	USABLE ON CODE	U/M	QTY INC IN UNIT
						33(U/W 114H5400-3, -4)(ALT FOR 114H5400-5).....		
						GROUP 08 CHASSIS ASSEMBLY METAL 114E2184-11, -13		
9	1	XAFZZ		77272	114E2185-33	PANEL USED ON 114E2186-16, -19, -23, -26, -30, -33.....	EA	1
9	2	XAFZZ		17272	114E2185-40	CHANNEL USED ON 114E2186-19, -23, -26, -30, -33(U/W 114E2E85-13)	EA	1
9	3	PAFZZ	5340-00-826-6993	99378	100-239-0	CLIP SPRING TENSION USED ON 114E2186-19, -23, -26, -30, -33(U/W. 114E216-13)	EA	1
9	4	XBZZ		71279	X20998	RIVET USED ON 114E2186-19, -23, -26, -30, -33(U/W 100-239-0).....	EA	1
9	5	PAFZZ	5310-00-582-9530	80205	NAS1068A08	NUT, SELF-LOCKING, PL USED ON 114E2186-16, -19, -23, -26, -30, -33.	EA	4
9	6	XBZZ		77272	114E2185-41	PANEL USED ON 114E2186-19, -23, -26, -30, -33.....	EA	1

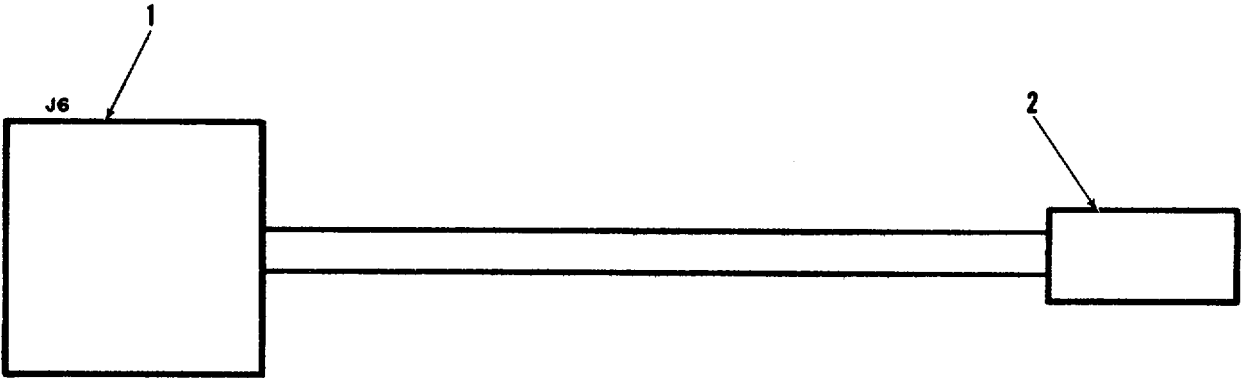


Figure 10. Cable Harness 114E2186-17, -20, 22, -24, -31, -34.

(1) ILLUSTRATION		(2)	(3)	(4)	(5)	(6)	(7)	(8)
(a) FIG NO.	(b) ITEM NO.	SMR CODE	NATIONAL STOCK NUMBER	FSCM	PART NUMBER	DESCRIPTION USABLE ON CODE	U/M	QTY INC IN UNIT
10	1	PAFZZ	5935-00-989-1962	96906	MS3122E20-41P	GROUP 09 CABLE HARNESS 114E2186-17, -20, -22, -24, -31, -34		
10	2	PAFZZ	5940-00-805-7625	00779	321029	CONNECTOR, RECEPTACL USED ON 114E2186-30..... SPLICE, CONDUCTOR USED ON 114E2186-30	EA EA	1 1

NATIONAL STOCK NUMBER AND PART NUMBER INDEX

NOTE: LATEST NATIONAL STOCK NUMBER AND PART NUMBER ASSIGNMENTS ARE INCLUDED AT END OF INDEX

STOCK NUMBER	FIGURE NO.	ITEM NO.	STOCK NUMBER	FIGURE NO.	ITEM NO.
5910-00-007-2004	2	7	5905-00-249-4256	4	20
5910-00-007-2004	3	6	5905-00-252-4018	2	18
5910-00-007-2004	6	2	5325-00-263-6632	1	10
5905-00-018-0860	2	14	5310-00-266-0510	8	7
5905-00-018-0860	3	12	5905-00-279-1757	7	4
5310-00-045-3299	8	2	5905-00-219-2616	7	1
5905-00-051-0986	7	3	5905-00-279-2649	5	23
5950-00-053-3714	1	35	5905-00-279-2667	4	21
5305-00-054-6670	1	2A	5905-00-279-2673	4	19
5905-00-068-5920	1	45	5905-00-279-3497	7	2
5999-00-078-6804	1	41	5905-00-279-3499	4	13
5905-00-079-3499	6	21	5905-00-279-3504	4	10
5310-00-081-8087	3	20	5S05-00-279-3506	2	15
5940-00-082-4869	2	31	5905-00-279-3506	6	16
5961-00-087-6047	2	1	5905-00-279-3511	4	8
5961-00-087-6047	3	1	5905-00-219-3519	4	14
5961-00-087-6047	4	1	5305-00-281-9512	1	46
5961-00-087-6047	5	2	5905-00-299-2052	6	23
5961-00-087-6047	6	1	5305-00-339-8802	1	11
5310-00-088-0551	1	13	5330-00-350-4315	8	5
5930-00-089-9518	1	19	5905-00-400-4502	3	15
5905-00-089-9535	1	57	5905-00-403-8837	5	21
5910-00-104-0144	2	6	5910-00-405-1133	1	5i
5910-00-104-0144	3	5	5905-00-412-3776	5	35
5910-00-104-0144	6	4	5905-00-413-1200	5	20
5905-00-104-8345	3	15	5305-00-421-7853	8	25
5961-00-106-6991	4	1	5905-00-432-0463	5	47
5905-00-106-9344	6	15	5905-00-435-1720	3	15
5905-00-107-5522	6	18	6615-00-451-0591	8	15
5905-00-110-0196	2	12	5935-00-451-5555	1	40
5905-00-110-0196	4	9	5505-00-470-9163	5	26
5905-00-110-0196	6	17	5905-00-491-1985	5	45
5905-00-111-4734	3	15	5905-00-492-7607	5	31
5905-00-111-8357	4	18	5940-00-500-5644	6	33
5905-00-111-8357	6	20	5365-00-529-9213	1	15
5905-00-113-4856	3	15	5940-00-557-1627	1	76
5905-00-113-7346	4	16	5905-00-557-9100	1	45
5905-00-113-7346	5	24	5961-00-579-4965	5	4
5905-00-114-2853	6	22	5365-00-580-5317	1	72
5905-00-114-5381	3	15	4730-00-580-9165	1	60
5905-00-114-5388	3	15	5310-00-582-9530	9	5
5905-00-114-5438	3	15	5330-00-584-0265	1	61
5910-00-115-1987	5	5	5310-00-616-6822	1	37
5905-00-116-8561	3	15	5310-00-616-6822	6	28
5905-00-121-9861	5	37	5330-00-631-1341	8	4
5961-00-124-5019	3	8	6615-00-670-7843	1	27
6615-00-133-7840	1	32	5355-00-682-6548	1	18
6615-00-133-7869	5	14	5961-00-686-8578	6	12
5905-00-138-7396	5	46	5910-00-688-2822	2	4
5905-00-141-0596	4	11	5910-00-688-2822	3	4
5305-00-151-1380	1	24	5961-00-688-6316	4	2
5310-00-167-0738	1	47	5961-00-688-6316	5	3
5310-00-167-0753	1	3	5905-00-689-1290	5	19
5310-00-167-0812	1	64	5910-00-702-1907	1	51
5310-00-167-0831	1	25	5315-00-702-9650	8	20
5310-00-167-0832	3	21	5950-00-715-4638	3	27
5310-00-167-0832	4	24	5905-00-122-4889	5	47
5310-00-167-0832	5	51	5935-00-724-5762	4	7
5310-00-167-0832	6	28	5905-00-726-7506	5	47
5310-00-167-0833	1	23	5940-00-727-4974	8	18
5310-00-161-0835	1	63	5999-00-738-6013	3	25
5905-00-171-2003	5	36	5905-00-152-3921	5	47
5905-00-172-7945	6	22	5950-00-755-9203	2	20
5325-00-174-5317	1	71	5950-00-755-9203	3	17
5305-00-175-3227	1	79	5935-00-758-5641	2	8
5930-00-177-2806	1	19	5935-00-758-5641	3	7
6625-00-179-1684	5	1	5905-00-761-5398	4	17
6615-00-179-4968	1	1	5340-00-76-2134	2	27
6615-00-179-4970	1	31	5961-00-777-0925	3	2
5310-00-183-4354	1	58	6615-00-781-0497	8	16
5310-00-184-8988	1	5	5365-00-781-4723	8	12
5905-00-185-8510	2	16	6615-00-781-4724	8	15
5905-00-185-8510	4	12	6615-00-781-4724	8	15
5905-00-185-8510	6	13	5905-00-782-4108	5	34
5905-00-190-8883	7	7	5910-00-786-9202	5	12Z
5905-00-192-3971	2	11	5950-00-799-4163	2	21
5905-00-197-0224	5	18	5950-00-799-4163	3	18
5310-00-207-9364	1	53	5950-00-799-4163	6	25
5310-00-208-5769	1	56	5310-00-804-0141	8	8
5905-00-247-8722	4	15	5940-00-805-7625	10	2

SECTION IV

TM 11-6610-202-34P

NATIONAL STOCK NUMBER AND PART NUMBER INDEX

STOCK NUMBER	FIGURE NO.	ITEM NO.	STOCK NUMBER	FIGURE NO.	ITEM NO.
6615-00-809-5229	1	1	5961-00-892-1075	1	65
6615-00-809-5229	1	1	5910-00-892-7613	4	6
6615-00-809-5233	1	62	5310-00-905-8451	1	4
5910-00-811-2946	2	3	5310-00-905-8451	2	23
5910-00-811-2946	6	6	5310-00-905-8451	5	50
5905-00-811-5552	6	21	5310-00-905-8451	6	27
5905-00-812-7961	5	47	6625-00-908-9106	5	13
5305-00-813-5790	1	22	1680-00-908-9169	1	30
5905-00-814-7595	3	10	5935-00-909-0469	1	40
5905-00-814-7596	2	14	5999-00-909-0522	3	23
5905-00-814-7596	3	12	5999-00-909-0522	5	54
5905-00-814-7596	3	14	5905-00-912-6472	5	42
5905-00-814-7885	2	10	5905-00-917-0352	5	46
5905-00-814-7895	2	14	5905-00-917-5523	5	29
5905-00-814-7895	3	12	593-00-918-6988	1	39
5905-00-814-7900	2	14	5905-00-921-0326	5	30
5905-00-814-7900	3	12	5S05-00-922-7218	5	33
5910-00-815-0386	4	5	5905-00-924-3317	5	41
5910-00-815-0386	6	5	5905-00-925-8762	5	22
5905-00-815-7207	2	14	6130-00-932-1591	1	68
5905-00-815-7207	3	12	5310-00-933-8119	1	3A
5930-00-815-9112	1	17	5905-00-935-8540	3	15
5961-00-816-1605	2	1	5905-00-935-8542	3	12
5365-00-820-4382	2	24	5905-00-935-8543	3	15
5970-00-821-3595	1	66	5910-00-936-1522	5	11
5910-00-821-7071	6	8	1680-00-937-3462	1	29
5910-00-823-1538	4	4	1680-00-937-3462	1	29
5910-00-823-1538	6	7	5905-00-940-2668	5	44
5999-00-823-9560	5	55	5310-00-941-6019	1	77
5365-00-824-2301	8	14	5961-00-943-4081	1	8
5905-00-825-0957	5	47	5930-00-944-8666	7	8
5910-00-825-1637	6	8	5905-00-946-6352	5	28
5975-00-825-3330	1	6	5905-00-947-7823	5	40
5340-00-826-6993	2	28	5905-00-948-7206	5	27
5340-00-826-6993	3	26	5905-00-948-7543	2	14
5340-00-826-6993	4	27	5905-00-948-7543	3	12
5340-00-826-6993	6	31	5905-00-948-7549	2	14
5340-00-826-6993	9	3	5905-00-948-7549	3	12
5945-00-827-5127	5	13	5905-00-948-7550	2	14
5905-00-833-3873	5	41	5905-00-948-7550	3	12
5905-00-8J3-5819	5	32	5905-00-948-7568	2	19
5910-00-833-7797	6	3	5905-00-948-7568	3	16
5905-00-834-6445	5	43	5905-00-949-7220	5	45
5310-00-834-7420	1	10	5310-00-950-1310	1	12
5310-00-834-7420	8	2	5910-00-950-5348	5	7
5910-00-836-0715	4	3	5905-00-950-6780	2	14
5905-00-839-9799	5	47	5950-00-950-7706	1	80
5305-00-840-5299	1	9	5950-00-950-7706	4	22
5305-00-842-0239	1	14	5950-00-952-8406	2	22
5305-00-842-0251	1	43	5950-00-952-8406	3	19
5305-00-842-0251	2	25	6615-00-953-2310	8	9
5305-00-842-0251	4	25	5305-00-954-6506	8	25
5305-00-842-0251	5	52	5950-00-959-3285	5	49
5305-00-842-0251	6	29	5305-00-963-2048	8	1
53C5-00-842-0251	8	1	5961-00-964-6808	2	2
5905-00-842-6861	5	47	5310-00-969-8949	8	11
5905-00-843-6614	5	47	5905-00-974-5594	5	46
5905-00-843-6615	5	25	5910-00-976-7690	5	9
5905-00-846-7271	2	14	5935-00-980-3927	1	38
5905-00-846-7271	3	12	5905-00-982-0215	5	46
5910-00-847-7288	5	10	5905-00-982-0926	5	46
5905-00-851-0296	2	14	5905-00-982-8296	5	39
5950-00-851-4221	6	26	5305-00-984-4992	1	36
5905-00-853-3774	5	47	5305-00-984-6193	1	73
5305-00-866-0934	1	36	5305-00-989-0682	1	55
5305-00-866-0934	1	74	5305-00-989-0682	5	61
5305-00-866-0934	3	22	5935-00-989-1962	10	1
5961-00-875-7925	1	68	5305-00-989-7434	1	2
9905-00-877-0504	1	54	5305-01-00b-6848	8	23
5826-00-877-0556	1	21	5905-01-056-8196	6	19
5826-00-877-0580	1	26	5905-01-056-8208	6	14
5826-00-877-0619	8	13	6615-01-121-6468	1	34
5910-00-880-4156	6	9	6615-01-140-8045	1	1
5961-00-883-6389	5	16			

FSCM PART NUMBER
88044 AN345C1

FIGURE NO. ITEM NO.
8 7

FSCM PART NUMBER
88044 AN515-2R6

FIGURE NO. ITEM NO.
1 55

NATIONAL STOCK NUMBER AND PART NUMBER INDEX

FSCM	PART NUMBER	FIGURE	ITEM	FSCM	PART NUMBER	FIGURE	ITEM
		NO.	NO.			NO.	NO.
88044	AN515-2R8	1	44	81205	BACR14CJ563	2	14
88044	AN515-4R10	1	24	81205	BACR14CJ563	3	12
88044	AN515-4RB	1	11	71212	BACR14CJ623	2	14
88044	AN515-6R12	1	36	77272	BACR14CJ623	3	12
88044	AN515-6R9	1	46	81205	BACR14CJ822	2	14
88044	AN515-8R8	1	73	81205	BACR14CJ822	3	12
88044	AN535-0-3	1	19	81205	BACR14CJ912	2	14
88044	AN924-4	1	56	81205	BACR14CJ912	3	12
88044	AN960-4L	1	25	81205	BAC27TEX-2	5	62
88044	AN960-416L	1	63	85323	BX3278	1	35
88044	AN960-6L	3	21	81349	CK058X471K	5	9
88044	AN960--6L	4	24	81349	CK06BX103K	5	10
88044	AN960-6L	5	51	81349	CP05A1KB104K3	2	4
88044	AN960-6L	6	28	81349	CP05A1K8104K3	3	4
88044	AN960-8L	1	23	81349	CP05A1KC104K3	6	8
88044	AN960C10L	1	64	81349	CP05A1KC223K3	4	4
88044	AN960C3L	1	58	81349	CP05A1KC223K3	6	7
88044	AN960D6	1	41	81349	CP05A1KE333K3	6	8
88044	AN960D6L	1	5	81349	CP05A1KF102K3	6	3
88044	AN960PD10L	1	3	81349	CP05A1KF222K3	4	3
77272	A02VS318-2	1	68	81349	CS138E106K	5	11
81205	BACC45HL12	4	1	81349	CS138E416K	6	9
81205	BACC45HL13	6	10	81349	CS13BF475K	5	12
81205	BACC45HL17	5	15	80223	DOT11	2	20
81205	BACC45HL8	2	8	80223	DOT11	3	17
81205	8ACC45HL8	3	1	80223	D00T25	6	26
81205	BACC45HM12	1	39	80223	DOT3	1	80
77212	BACC45HM13	1	38	80223	DOT3	4	22
77272	BACC45HM17	1	40	80223	DOT45	2	22
81205	BACC45HM8	1	40	80223	DOT45	3	19
81205	BACC47BF1	1	42	80223	DOTSH	3	27
81205	BACD5C605	2	1	80223	DIT270	5	49
81205	BACM10M1BKW	1	7B	80223	DIT276	5	48
81205	BACN10DN26	1	53	35344	EA1AD001	5	13
81205	BACP50A3	3	25	24211	G872AR2150	5	13
81205	BACP50A4	3	23	57771	GS4-11	3	22
81205	BACP50A4	5	54	57771	GS4-11	5	53
81205	BACR14AM202	1	57	57771	GS4-11	6	29
81205	BACR14CJ100	2	10	38315	HS10-1MA	1	16
81205	BACR14CJ102	3	10	99515	H1-205E	5	7
81205	BACR1CJ103	2	14	81349	JAN1N547M	4	2
81205	BACR14CJ103	3	12	81349	JAN1N541M	5	3
81205	BACR14CJ103	3	14	81349	JAN1N645	3	1
71272	BACR14CJ113	2	14	81349	JAN2N2326A	3	2
81205	BACR14CJ123	2	14	81349	JAN2N652A	2	9
81205	BACR14CJ123	3	12	81349	JAN2N652A	6	11
81205	BACR14CJ133	2	14	81349	JAN2N686	1	65
81205	BACR14CJ133	3	12	05397	K5N20KN	1	51
81205	BACR14CJ153	2	14	96906	MS15195-801	8	8
81205	BACR14CJ153	3	12	96906	MS16555-602	8	20
77272	BACR14CJ161	2	19	96906	MS20364-63	4	23
77212	BACR14CJ161	3	16	96906	MS21044N04	1	13
81205	BACR14CJ163	2	14	96906	MS21044N06	3	20
81205	BACR14CJ163	3	12	88044	MS21083N06	5	50
81205	BACR14CJ183	2	14	96906	MS21083N06	1	4
81205	BACR14CJ183	3	12	96906	MS21083N06	2	23
81205	BACR14CJ203	2	14	96906	MS21083N06	6	27
81205	BACR14CJ203	3	12	96906	MS21083N08	1	77
81205	BACR14CJ223	2	14	96906	MS21924D4	1	60
81205	BACR14CJ223	3	12	96906	MS25089-3GR	1	17
81205	BACR14CJ223	4	13	96906	MS27183-4	1	12
81205	BACR14CJ243	2	14	96906	MS28175-012	1	61
81205	BACR14CJ243	3	12	96906	MS28775-021	8	4
81205	BACR14CJ273	2	14	96906	MS3122120-41P	10	1
81205	BACR14CJ273	3	12	96906	MS3193A20-20A	1	41
81205	BACR14CJ303	2	14	96906	MS35043-23	4	11
81205	BACR14CJ331	3	9	96906	MS35206-205	5	61
81205	BACR14CJ332	3	13	96906	MS35207-263	1	2
81205	BACR14CJ333	2	14	81348	MS35338-1J7	1	3A
81205	BACR14CJ333	3	12	96906	MS35338-42	8	2
77272	BACR14CJ363	2	14	96906	MS35489-4	1	71
77272	BACR14CJ363	3	12	96906	MS35489-6	1	70
81205	BACR14CJ393	2	14	96906	MS35649-2	1	53
81205	BACR14CJ393	3	12	96906	MS51951-45	1	2A
81205	BACR14CJ433	2	14	80205	NAS1068A08	9	5
81205	BACR14CJ433	3	12	80205	NAS1081-04A7P	8	23
81205	BACR14CJ472	3	11	80205	NAS1081-06A7L	8	25
81205	BACR14CJ473	2	14	80205	NAS1081-06A7P	8	25
81205	BACR14CJ473	3	12	80205	NAS1191C08P8N	8	1
81205	BACR14CJ513	3	12	80205	NAS43DD0-8	1	72

NATIONAL STOCK NUMBER AND PART NUMBER INDEX

FSCM	PART NUMBER	FIGURE	ITEM	FSCM	PART NUMBER	FIGURE	ITEM
		NO.	NO.			NO.	NO.
80205	NAS43DD1-12	1	75	01121	RC20GF393J	7	2
80205	NAS43DD1-5	2	24	81349	RC20GF470J	2	18
80205	NAS601-10P	1	74	81349	RC20GF412J	4	10
80802	NAS601-10P	1	36	81349	RC20GF511J	4	8
80802	NAS601-10P	3	22	01121	RC20GF512J	6	22
80205	NAS601-8P	1	43	81349	RC20GF622J	4	19
80205	NAS601-8P	2	25	81349	RC20GF152J	7	5
80205	NAS601-8P	4	25	81349	RC32GF181J	5	23
80205	NAS601-8P	5	52	81349	RC32GF561J	6	23
80205	NAS601-8P	6	29	81349	RNC55142262FS	5	46
80205	NAS601-8P	8	1	81349	RNC60H3653FS	5	47
80205	NAS602-10P	1	9	81349	RNC60K1102FS	1	3
80205	NAS602--6P	1	22	81349	RN55C1431F	5	30
80205	NAS602-7P	1	14	81349	RN55C1622F	5	46
80205	NAS620-6L	1	37	81349	RN55C1782F	7	3
80205	NAS620-6L	6	20	81349	RN55C1822F	5	46
80205	NAS620-8L	1	10	81349	RN55C2052F	5	46
80205	NAS620-8L	8	2	81349	RN55C2432F	5	42
71590	PA024-5743	7	8	81349	RN55C2612F	5	46
81349	RCR05G103KS	5	31	81349	RN55C2742F	5	39
81349	RCR05G155JS	5	45	81349	RN60C1153F	5	47
81349	RCR05G183JS	5	35	81349	RN60C1503F	5	25
81349	RCR05G203JS	5	20	81349	RN60C1543F	5	47
81349	RCR05G511JS	5	18	81349	RN60C1873F	5	47
81349	RCR05G512JS	5	19	81349	RN60C2003F	5	32
81349	RCR20G101JS	6	15	81349	RN60C2263F	5	47
81349	RCR20G102JS	2	12	81349	RN60C2553F	5	43
81349	RCR20G102JS	4	9	81349	RN60C2613F	5	47
81349	RCR20G102JS	6	17	81349	RN60C3013F	5	47
81349	RCR20G160JP	3	15	81349	RN60C3323F	5	47
81349	RCR20G180JS	3	15	81349	RN60C3832F	5	47
81349	RCR20G200JS	3	15	81349	RN60C4023F	5	47
81349	RCR20G220JS	3	15	81349	RN60C7872F	5	47
81349	RCR20G240JS	3	15	81349	RN603573F	5	38
81349	RCR20G270JS	3	15	81349	RT11C2L103	1	45
81349	RCR20G300JS	3	15	81349	RT11C2P103	4	17
81349	RCR20G303JS	3	12	81349	RT11C2P501	6	21
81349	RCR20G330JS	3	15	81349	SE12XC01	2	31
81349	RCR20G360JP	3	15	99928	SRA2C248	5	13
81349	RCR20G430JS	3	15	59730	TY13	1	6
81349	RCR20G470JP	3	15	07263	UA741AHN	5	1
81349	RCR20G510JS	3	15	77272	VS15305C3126-24	8	12
81349	RCR20G560JS	3	15	71279	X20998	2	29
81349	RCR20G681JS	4	18	71279	X20998	4	28
81349	RCR20G681JS	6	20	71279	X20998	6	32
81349	RCR32G102JS	5	37	71279	X20998	9	4
81349	RCR32G271JS	4	s15	98230	0N039200	1	8
81349	RCR32G470JS	4	16	03877	1N1583	1	7
81349	RCR32G470JS	5	24	01295	1N1820	1	69
81349	RCR42G512JS	6	22	07413	1N29848	1	69
81349	RC05GF152J	5	41	81349	1N30208	5	4
81349	RC05GF182J	5	29	01295	1N4004	4	1
81349	RC05GF220J	5	22	81349	1N4608	2	1
81349	RC05GF223J	5	21	81349	1N4608	4	1
81349	RC05GF272J	5	44	81349	1N4608	5	2
81349	RC05GF392J	5	33	81349	1N4608	6	1
81349	RC05GF472J	5	34	99378	100-200-1-2	2	27
81349	RC05GF563J	5	27	99378	100-239-0	2	28
81349	RC05GF622J	5	26	99378	100-239-0	3	26
81349	RC05GF624J	5	45	99378	100-239-0	4	27
81349	RC05GF752J	5	28	99378	100-239-0	6	31
81349	RC05GF754J	5	40	99378	100-239-0	9	3
01121	RC20GF100J	7	7	06413	102-05R	1	50
81349	RC20GF103J	2	16	77272	107E2321-209	1	68
81349	RC20GF103J	4	12	77272	107H5001-3	1	27
81349	RC20GF103J	6	13	77272	107H5001-6	1	32
81349	RC20GF113J	4	21	77272	107H5001-8	1	33
01121	RC20GF152J	7	4	77272	107H5003-1	6	30
01121	RC20GF153J	7	1	77272	107H5003-4	6	30
81344	RC20GF202J	7	6	77272	107H5005-1	6	35
81349	RC20GF204J	5	36	77272	107H5005-4	6	35
81349	RC20GF220J	4	14	37695	107218-2	1	66
01121	RC20GF222J	6	18	56289	1120606C5050J1	4	6
01121	RC20GF223J	6	19	56289	1120606C5050J1	5	8
81349	RC20GF273J	4	13	56289	1120606C7050J1	4	6
01121	RC20GF274J	6	14	77272	114E2184-13	1	52
81349	RC20GF331J	2	t11	77272	114E2184-9	1	1A
81349	RC20GF332J	2	15	77272	114E2185-14	1	21
81349	RC20GF332J	6	16	77272	114E2185-21	1	26
81349	RC20GF363J	4	20	77272	114E2185-22	1	48

NATIONAL STOCK NUMBER AND PART NUMBER INDEX

FSCM	PART NUMBER	FIGURE NO.	ITEM NO.	FSCM	PART NUMBER	FIGURE NO.	ITEM NO.
77272	114E2185-24	1	49	77272	114V4004-1	4	30
77272	114E2185-33	9	1	77272	114V4007-2	3	28 /
77272	114E2185-35	1	20	77272	114V4009-2	1	30
77272	114E2185-40	9	2	77272	114V4012-1	5	58
77272	114E2185-41	9	6	77272	114V4013-1	1	31
77272	114E2186-10	1	78	77272	114V4013-2	5	59
77272	114E2186-21	1	60	77272	114V4013-3	1	34
77272	114E2186-24	1	15	77272	114V4014-1	5	57
77272	114E2186-25	1	19	77272	114V4014-3	5	56
77272	114E2186-26	1	1	77272	114V4014-4	5	60
77272	114E2186-26	1	1	77272	114V5012-1	8	5
77272	114E2186-30	1	1	78452	1423	1	67
77272	114E2186-31	1	15	56289	150D105X9035A2	2	6
77272	114E2186-32	1	19	56289	150D105X9035A2	3	5
77272	114E218633	1	1	56289	150D105X9035A2	6	4
77272	114E2186-34	1	15	56289	150D106X0035R2	4	5
77272	114HS540-10	8	16	56289	150D106X0035R2	6	5
77272	114HS541-1	8	9	56289	150D475X9035B2	2	7
77272	114HS541-5	8	9	56289	150D475X9035B2	3	6
77272	114H5400-4	1	62	56289	150D475X9035B2	6	2
77272	114H5400-5	8	22	71279	160-2043-02-01-00	6	33
77272	114H5402-1	8	13	13499	184-8366-000	1	51
77272	114H5403-1	8	19	80131	2N1602	1	68
77272	114H5403-2	8	21	56289	2N2946	5	17
77272	114H5403-3	8	21	81349	2N338	6	12
77272	114H5403-4	8	19	34148	2N4033	3	8
77272	114H5405-1	8	11	03877	2N887	2	2
77272	114H5406-1	8	17	71279	2099-2-02	3	24
77272	114H5407-1	8	8	97424	2L106K70P101	5	5
77272	114H5408-1	8	10	83330	2223	1	18
77272	114H5409-1	8	6	30003	247AS-C1526	2	21
77272	114H5410-1	8	15	30003	247AS-C1526	3	18
77272	114H5410-2	8	15	30003	247AS-C1526	6	25
77272	114H5410-3	8	15	80294	260L1-103	1	45
77272	114H5411-1	8	14	08294	260P-1-103	4	17
77272	114H5412-1	8	26	80294	260P1-501	6	21
77272	114H5412-2	8	3	24446	29F585	2	3
77272	114H5412-4	8	24	24446	29F585	6	6
77272	114H5412-5	8	3	95017	29F585G4	3	3
77272	114H5504-2	1	59	14936	3N128	5	16
77272	114H5504-3	1	59	01526	3SAV5004K1	5	13
77272	114H5505-1	1	54	72819	304839	6	24
77272	114H6000-3	1	30	06413	305-04	8	18
77272	114H6000-4	1	30	00779	31899	1	76
77272	114H6000-5	1	30	00779	321029	10	2
77272	114H6002-3	2	26	09384	4-312-0002	5	14
77272	114H6002-4	2	26	04660	580002-001	5	55
77272	114H6004-2	2	32	88245	76028	6	34
77272	114V4000-1	1	29	88245	7602B7	2	30
77272	114V4000-3	1	29	88245	7602B7	4	29
77272	114V4000-4	1	29	15818	809BE	5	1
77272	114V4003-1	4	26				

LATEST NATIONAL STOCK NUMBER ASSIGNMENTS

STOCK NUMBER	FIGURE NO.	ITEM NO.
5905-00-279-3504	2	13
5905-01-279-3504	2	13

LATEST NATIONAL STOCK NUMBER ASSIGNMENTS

FSCM	PART NUMBER	FIGURE NO.	ITEM NO.
56289	96P15491S4	2	5
77272	114H6000-1	1	28
01121	RC20GF2235	2	17
81345	RC20GF4725	2	13

By Order of the Secretary of the Army:

Official:

JOHN A. WICKHAM JR.
General, United States Army
Chief of Staff

ROBERT M. JOYCE
Major General, United States Army
The Adjutant General

DISTRIBUTION:

To be distributed in accordance with DA Form 12-31, Direct and General Support Maintenance Requirements for CH-47A, B, & C Aircraft

☆U.S. GOVERNMENT PRINTING OFFICE: 1983-705-046/442

RECOMMENDED CHANGES TO EQUIPMENT TECHNICAL PUBLICATIONS



THEN... JOT DOWN THE DOPE ABOUT IT ON THIS FORM, CAREFULLY TEAR IT OUT, FOLD IT AND DROP IT IN THE MAIL!

SOMETHING WRONG WITH THIS PUBLICATION?

FROM: (PRINT YOUR UNIT'S COMPLETE ADDRESS)

DATE SENT

PUBLICATION NUMBER

PUBLICATION DATE

PUBLICATION TITLE

BE EXACT... PIN-POINT WHERE IT IS

PAGE NO.

PARA-GRAPH

FIGURE NO.

TABLE NO.

IN THIS SPACE TELL WHAT IS WRONG AND WHAT SHOULD BE DONE ABOUT IT:

TEAR ALONG PERFORATED LINE

PRINTED NAME, GRADE OR TITLE, AND TELEPHONE NUMBER

SIGN HERE:

DA FORM 2028-2
1 JUL 79

PREVIOUS EDITIONS ARE OBSOLETE.

P.S.—IF YOUR OUTFIT WANTS TO KNOW ABOUT YOUR RECOMMENDATION MAKE A CARBON COPY OF THIS AND GIVE IT TO YOUR HEADQUARTERS.

PIN: 010250-000